

DEMON GR200R 4VALVES



REV. 00 202202

RIGHT CRANKCASE COVER

GR200RR-03

PICTURE

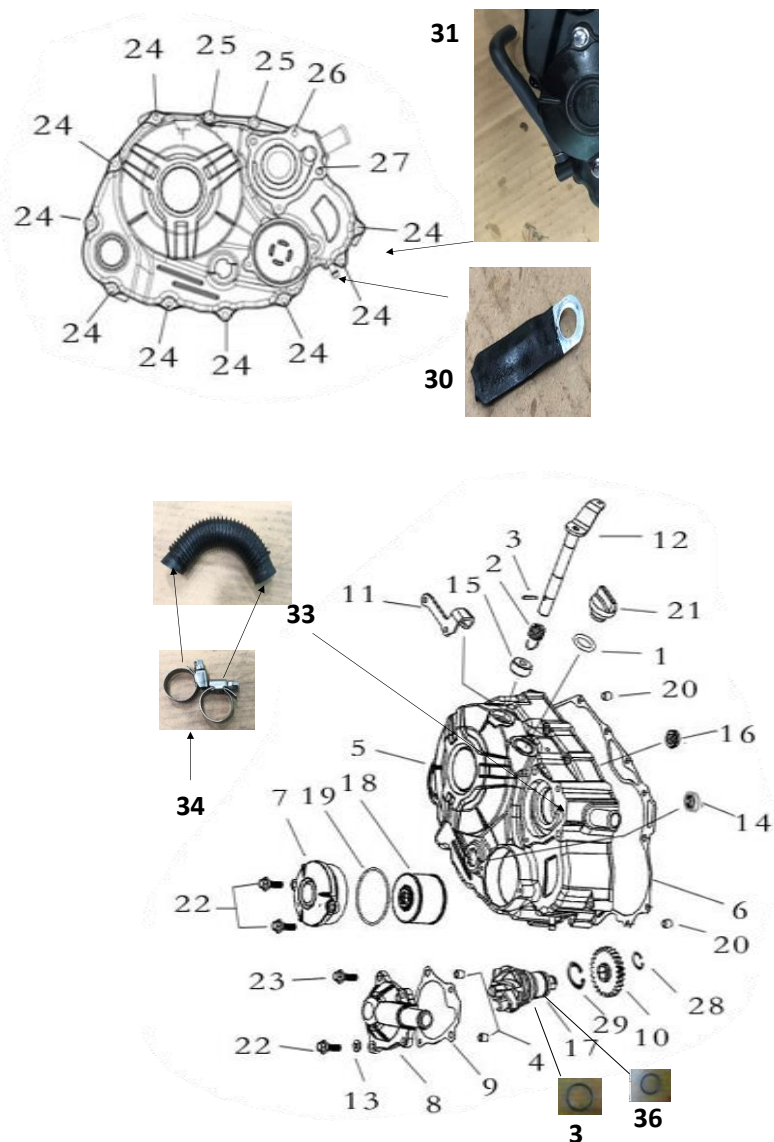
GPX CODE

ENGLISH DESCRIPTION

QTY

UNIT

PRICE/UNIT
(JPY)

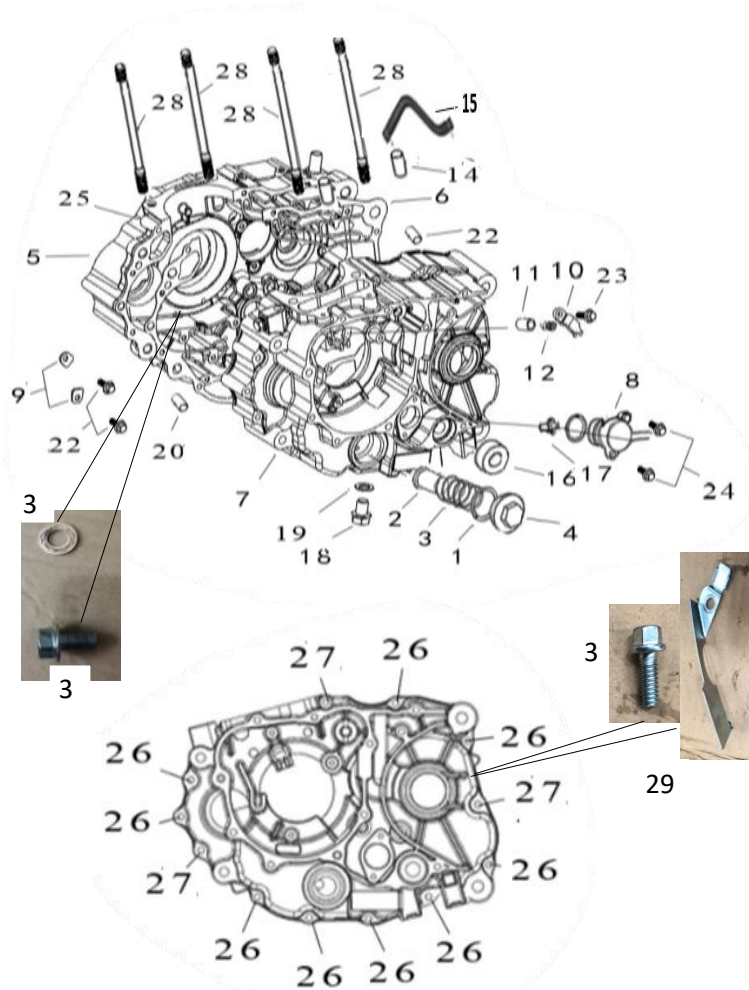


1	120-03-0101	O-RING, DIPSTICK	1	PCS	¥100
2	120-03-0201	SPRING, CLUTCH LEVER	1	PCS	¥100
3	120-03-0301	PIN, CLUTCH LEVER	1	PCS	¥100
4	120-03-0401	DOWEL PIN, WATER PUMP	2	PCS	¥100
5	120-03-0502	COVER COMP., CRANKCASE, RH	1	PCS	¥16,000
6	120-03-0601	GASKET, CRANKCASE COVER, RH	1	PCS	¥700
7	120-03-0702	COVER, OIL ELEMENT	1	PCS	¥2,200
8	120-03-0801	COVER, WATER PUMP	1	PCS	¥2,600
9	120-03-0901	GASKET, WATER PUMP	1	PCS	¥200
10	120-03-1001	GEAR COMP., WATER PUMP DRIVEN	1	PCS	¥1,600
11	120-03-1101	STAY, CLUTCH CABLE ADJUSTING	1	PCS	¥600
12	120-03-1201	LEVER COMP., CLUTCH	1	PCS	¥1,100
13	120-01-1501	WASHER, OIL PASSAGE	1	PCS	¥100
14	120-03-1401	GLASS, SIGHT	1	PCS	¥200
15	120-03-1501	OIL SEAL, CLUTCH LEVER	1	PCS	¥300
16	120-03-1601	OIL SEAL, CRANKSHAFT, RH	1	PCS	¥600
17	120-03-1701	PUMP ASSY., WATER	1	PCS	¥8,400
18	120-03-1801	ELEMENT ASSY., OIL	1	PCS	¥800
19	120-03-1901	O-RING, OIL ELEMENT COVER	1	PCS	¥500
20	120-03-2001	DOWEL PIN, CYLINDER HEAD	2	PCS	¥100
21	120-03-2101	PLUG, OIL FILLER	1	PCS	¥200
22	120-03-2201	BOLT, M6X20	3	PCS	¥100
23	120-03-2301	BOLT, M6X30-CR MC	1	PCS	¥100
24	120-03-2402	Bolt, M6×40-Cr mc	9	PCS	¥100
25	120-03-2502	Bolt, M6×50-Cr mc	2	PCS	¥100
26	120-03-2602	Bolt, M6×90-Cr mc	1	PCS	¥200
27	120-03-2702	Bolt, M6×95-Cr mc	1	PCS	¥200
28	120-03-2801	CIRCLIP, 16	1	PCS	¥100
29	120-03-2901	CIRCLIP, 26	1	PCS	¥100
30	120-03-3001	CLAMP WIRE	1	PCS	¥100
31	120-03-3101	PIPE	1	PCS	¥400
33	120-03-3301	PIPE COOLING	1	PCS	¥900
34	120-03-3401	CLAMP	2	PCS	¥500
35	120-03-3501	O-ring 2, water pump 2.00 x 31.5	1	PCS	¥400
36	120-03-3601	O-ring, water pump 2.00 x 21.9	1	PCS	¥400

CRANKCASE

GR200RR-04

PICTURE



GPX CODE

ENGLISH DESCRIPTION

QTY

UNIT

PRICE/UNIT
(JPY)

1	120-04-0101	O-RING, VALVE COVER ($\Phi 35 \times \Phi 3$)	1	PCS	¥100
2	120-04-0201	GAUZE SET, OIL FILTER	1	PCS	¥200
3	120-04-0301	SPRING, GAUZE	1	PCS	¥100
4	120-04-0401	COVER, OIL FILTER GAUZE	1	PCS	¥600
5	120-04-0502	CRANKCASE COMP., RH	1	PCS	¥21,000
6	120-04-0801	GASKET, CRANKCASE	1	PCS	¥700
7	120-04-0702	CRANKCASE, LH	1	PCS	¥30,000
8	120-04-1001	INDICATOR, GEAR	1	PCS	¥2,800
9	120-04-1101	PLATE, BEARING PRESS	2	PCS	¥100
10	120-04-1201	PLATE, SPRING PRESS	1	PCS	¥300
11	120-04-1301	PIN, PRESSING	1	PCS	¥300
12	120-04-1401	SPRING, PIN	1	PCS	¥200
14	120-04-1601	DOWEL PIN, CRANKCASE ($\Phi 10 \times 14$)	2	PCS	¥100
15	120-13-3601	EXHAUST PIPE	1	PCS	¥600
16	120-04-1801	OIL SEAL, GEARSHIFT SHAFT ($\Phi 14 \times \Phi 28$)	1	PCS	¥500
17	120-04-1901	COMBINATION OF GEAR LINE CONTACTS	1	PCS	¥300
18	120-04-2001	DRAIN PLUG, CRANKCASE	1	PCS	¥200
19	120-04-2101	GASKET, OIL DRAIN PLUG	1	PCS	¥100
20	120-03-2001	DOWEL PIN, CYLINDER HEAD	2	PCS	¥100
22	120-04-2401	BOLT, M6X16	2	PCS	¥100
23	120-04-2501	BOLT, M6X18-ZN C1A	1	PCS	¥100
24	120-04-2601	BOLT, M6X20	2	PCS	¥100
25	120-03-2402	Bolt, M6×40-Cr mc	1	PCS	¥100
26	120-03-2502	Bolt, M6×50-Cr mc	9	PCS	¥100
27	120-04-2701	Bolt, M6×60	3	PCS	¥100
28	120-04-2802	Stud B, M8×183	4	PCS	¥600
29	120-04-3001	CLIP, WIRE	1	PCS	¥100
30	120-01-2201	BOLT, M6X12	1	PCS	¥100
31	120-04-3201	COPPER WASHER, BOLT, CYLINDER	1	PCS	¥200
32	120-04-3301	FASTENING BOLT, BALANCE SHAFT	1	PCS	¥300

OIL PUMP

GR200RR-05

PICTURE

NO

GPX CODE

ENGLISH DESCRIPTION

QTY

UNIT

**PRICE/UNIT
(JPY)**

1

120-05-0101

PUMP ASSY., OIL

1

PCS

¥2,700

4

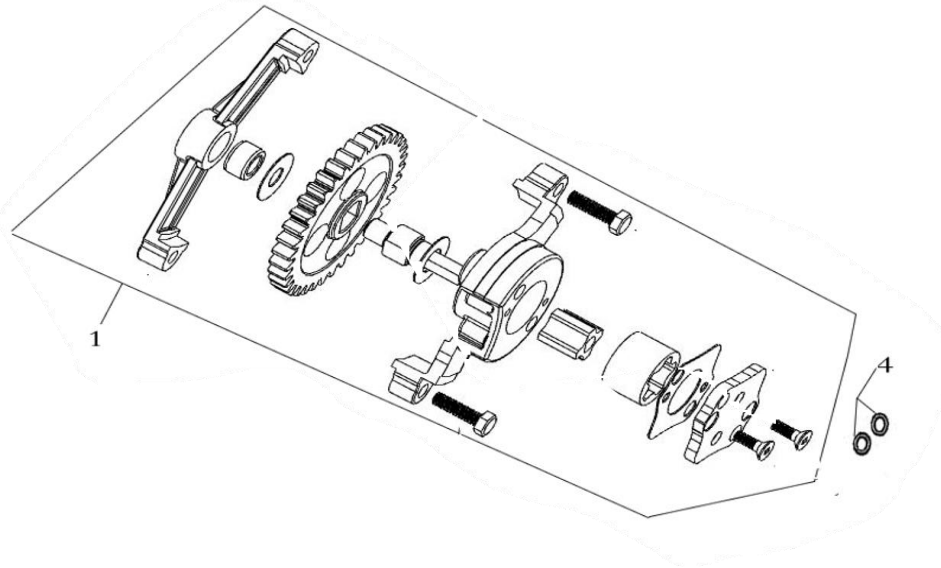
120-05-0401

O-RING, OIL PUMP

2

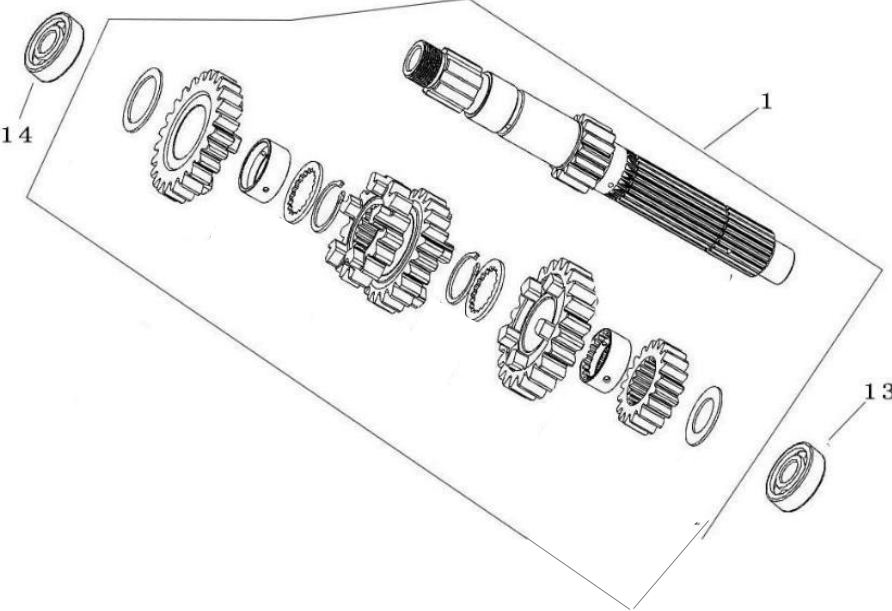
PCS

¥100



TRANSMISSION (1/2)

GR200RR-10/1

PICTURE	NO	GPX CODE	ENGLISH DESCRIPTION	QTY	UNIT	PRICE/UNIT (JPY)
	1	120-10-0101	SHAFT COMP., MAIN	1	PCS	¥15,000
	13	120-10-1301	BEARING,PLAIN, 6202-RS/FJK	1	PCS	¥800
	14	120-09-1801	BEARING, PLAIN, 6204/P6/FJK	1	PCS	¥1,300


AIR CLEANER/ENGINE/MUFFLER (1/3)

GR200RR-13

PICTURE	NO	ENGLISH DESCRIPTION	QTY	UNIT	PRICE/UNIT	
					(JPY)	
	1	120-13-0102-GW	MUFFLER REAR SECTION ASSY	1	SET	¥41,000
	2	120-13-0201	HOOP	1	PCS	¥1,700
	3	120-13-0301	GRAPHITE WASHER	1	PCS	¥300
	4	120-13-0401	T-COLLAR	1	PCS	¥500
	5	120-13-0501	T-RUBBER	2	PCS	¥200
	6	120-13-0601-GW	MUFFLER REAR SECTION	1	PCS	¥26,000
	7	120-13-0702	SHIELD, MUFFLER	1	PCS	¥4,400
	8	120-13-0801	REAR COVER, MUFFLER	1	PCS	¥3,800
	9	120-13-0901	MAT,FLAT M6	6	PCS	¥100
	10	120-13-1001	SPRING WASHER	3	PCS	¥100
	11	120-13-1101	BOLT	1	PCS	¥200
	12	120-13-1201	BOLT	2	PCS	¥200
	13	120-13-1301	BOLT	3	PCS	¥100
	14	120-13-1401	WIRE WASHER	3	PCS	¥100
	15	CR5-22-09	BOLT,HEXAGON FLANGE M8X35	1	PCS	¥200
	16	180-09-3201	BOLT,HEXAGON FLANGE M8X55	1	PCS	¥100
	17	LEG-26-02	GASKET,EXHAUST OPENING	1	PCS	¥300
	18	120-13-1802	MUFFER FRONT SECTION	1	SET	¥26,000
	19	180-06-3801	ACORN NUT M8X22	2	PCS	¥100
	20	120-13-2001	AIR CLEANER ASSY	1	PCS	¥9,700
	21	120-13-2101	FILTER,AIR CLEANER	1	PCS	¥1,400
	22	120-13-2201	BOLT,HEXAGON FLANGE M6X20	1	PCS	¥200
	23	120-13-2301	COLLAR 6X12	1	PCS	¥100
	24	120-13-2401-TH	I-RUBBER	1	PCS	¥100
	25	180-03-1601	NUT,CLIP M6	1	PCS	¥100
	26	120-13-2602	ENGINE 200 CC	1	SET	¥350,000

AIR CLEANER/ENGINE/MUFFLER (2/3)

GR200RR-13

PICTURE	NO		ENGLISH DESCRIPTION	QTY	UNIT	PRICE/UNIT (JPY)
	27	120-13-2702	REAR COVER, ENGINE LEFT	1	PCS	¥5,700
	28	601-04-2401	BOLT, M6X25	2	PCS	¥100
		120-13-2901	BOLT, M6X20	2	PCS	¥100
	29	120-13-3002	PAPER WASHER,INTAKE	1	PCS	¥300
	30	120-13-3101	BAKELITE MAT,INTAKE	1	PCS	¥400
	30	120-13-3102	BAKELITE MAT,INTAKE	1	PCS	¥600
	31	120-13-3201	CAP, INJECTOR	1	PCS	¥1,300
	32	K2150A068	SCREW,HEXAGON SOCKET M6X16	1	PCS	¥100
	33	120-13-3402	INJECTOR	1	PCS	¥15,000
	34	120-13-3502	PIPE SET, INLET	1	PCS	¥6,800
		120-13-3601	EXHAUST PIPE	1	PCS	¥600
	35	120-13-3701	BODY ASSY.,THROTTLE	1	SET	¥26,000
	36	120-13-3801	THROTTLE BODY	1	PCS	¥11,000
	37	120-13-3901	O-RING, SEAL	1	PCS	¥600
	38	120-13-4001	THREE-IN-ONE SENSOR	1	PCS	¥17,000
	39	120-13-4101	STEPPING MOTOR	1	PCS	¥8,100
	40	120-13-4201	BRACKET,RADIATOR	1	PCS	¥600
		120-13-4301	OUTLET PIPE	1	PCS	¥2,500
	41	120-13-4401	COOLING WATER TANK	1	PCS	¥2,500
	42	120-13-4501	OVERFLOW PIPE, WATER TANK	1	PCS	¥400
	44	120-13-4602	WATER PIPE, SMALL CIRCULATION	1	PCS	¥600
	51	120-13-4701	OVERFLOW PIPE, RADIATOR	1	PCS	¥800
	50	120-13-4801	INLET PIPE	1	PCS	¥1,900
	46	120-13-4901	RADIATOR ASSY	1	PCS	¥31,000
	47	120-13-5001	CAP,RADIATOR	1	PCS	¥1,300
	48	120-13-5101	RADIATOR BODY	1	PCS	¥20,000

AIR CLEANER/ENGINE/MUFFLER (3/3)

GR200RR-13

PICTURE

NO GPX CODE

ENGLISH DESCRIPTION

QTY

UNIT

PRICE/UNIT (JPY)

49	120-13-5201	COOLING FAN	1	PCS	¥12,000
54	120-13-5301	CABLE COMP.,THROTTLE	1	PCS	¥1,100
55	120-13-5401-TH	SHEATH,CLUTCH CABLE	1	PCS	¥500
56	120-13-5501	CABLE COMP.,CLUTCH	1	PCS	¥1,600
	120-13-5601-TH	DUST COVER	1	PCS	¥200
57	120-13-5702	INLET PIPE	1	PCS	¥600
44	120-13-5802	OUTLET PIPE1	1	PCS	¥600
45	120-13-5902	OUTLET PIPE2	1	PCS	¥600
42	120-13-6002	HOOP 1	2	PCS	¥200



BODY COMP., FRAME (1/2)

GR200RR-14

PICTURE

NO

GPX CODE

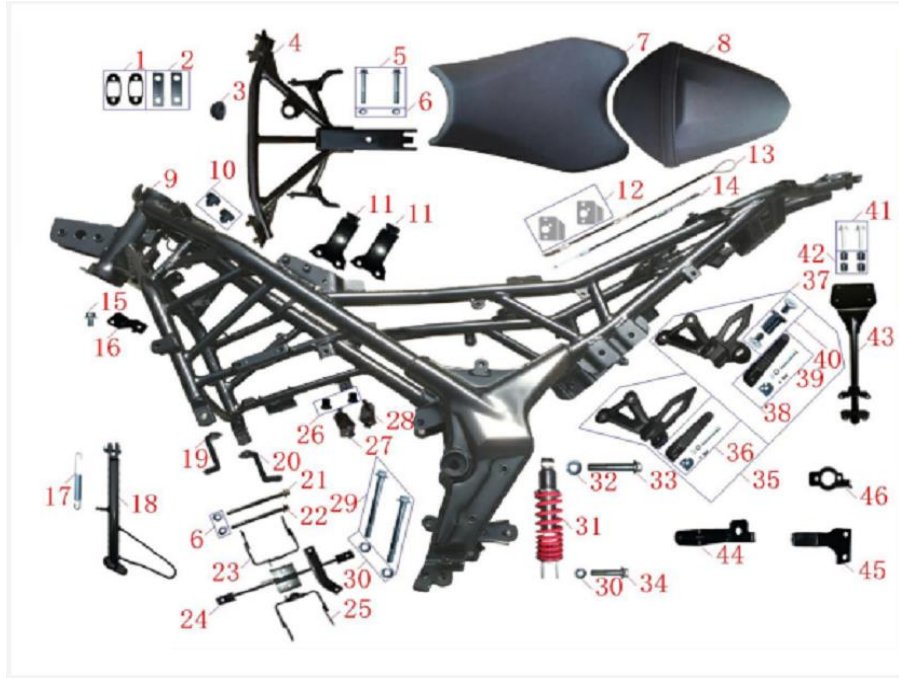
ENGLISH DESCRIPTION

QTY

UNIT

**PRICE/UNIT
(JPY)**

1	120-14-0101-TH	PAD, REAR VIEW MIRROR1	2	PCS	¥100
2	120-14-0201	PAD, REAR VIEW MIRROR2	2	PCS	¥200
3	120-14-0301	DAMPING RUBBER1	1	PCS	¥200
4	120-14-0401	BRACKET, HEADLIGHT	1	PCS	¥6,400
5	LEG-20-02	BOLT,HEXAGON FLANGE M8X45	2	PCS	¥200
6	DEMG-30-10	NUT,PREVAILING TORQUE TYPE HEXAGON WITH FLANGE M8	4	PCS	¥100
7	120-14-0702	FR.SEAT	1	PCS	¥8,900
8	120-14-0802	RR.SEAT	1	PCS	¥8,500
9	120-14-0902-BLK	BODY COMP,FRAME EDP+BLACK	1	PCS	¥88,000
9	120-14-0902-GRY	BODY COMP,FRAME EDP+GRAY	1	PCS	¥88,000
10	120-14-1001	DAMPING RUBBER2	2	PCS	¥200
11	120-14-1101	BRACKET, BODY COVER	2	PCS	¥600
12	180-09-3001	PLATE, SEAT LOCK	2	PCS	¥400
13	120-14-1301	CABLE,SEAT	1	PCS	¥400
14	120-14-1401	CABLE,SEAT	1	PCS	¥600
15	500-08-012	BOLT,HEXAGON FLANGE M8X12	1	PCS	¥100
16	120-14-1601	BRACKET, HORN	1	PCS	¥300
17	120-14-1701	SPRING,DRAG	1	PCS	¥300
18	120-14-1801	BAR ASSY.,SIDE STAND	1	PCS	¥2,500
19	120-14-1901	CONNECTING ARM, FRONT HANGER LEFT	1	PCS	¥2,200
20	120-14-2001	CONNECTING ARM, FRONT HANGER RIGHT	1	PCS	¥2,200
21	120-14-2101	BOLT,HEXAGON FLANGE M8X105	1	PCS	¥300
22	180-09-1101	BOLT,HEXAGON FLANGE M8X90	1	PCS	¥200
23	120-14-2301	LOWER BRACE,LOWER AIR GUIDE SLEEVE	1	PCS	¥700



BODY COMP., FRAME (2/2)

GR200RR-14

PICTURE

NO

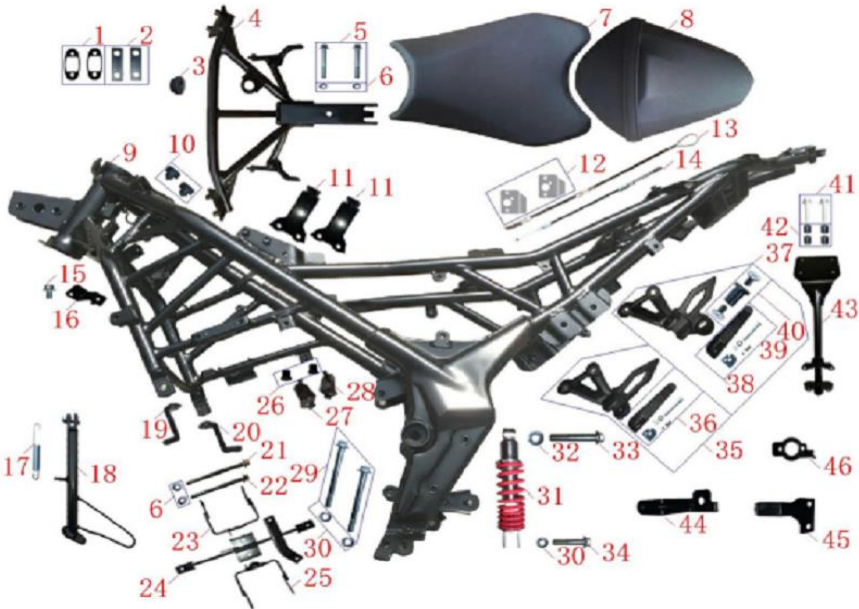
GPX CODE

ENGLISH DESCRIPTION

QTY

UNIT

PRICE/UNIT
(JPY)



24	120-14-2401	BRACKET,LOWER AIR GUIDE SLEEVE	1	PCS	¥1,300
25	120-14-2501	UPPER BRACE,LOWER AIR GUIDE SLEEVE	1	PCS	¥700
26	120-14-2601	T-RUBBER	2	PCS	¥200
27	120-14-2701	HANGER, LEFT WIND BOARD	1	PCS	¥400
28	120-14-2801	HANGER, RIGHT WIND BOARD	1	PCS	¥400
29	180-09-1701	AXIS M10X110	2	PCS	¥500
30	CR5-39-10	NUT,PREVAILING TORQUE TYPE HEXAGON	3	PCS	¥100
31	120-14-3101-TH	SHOCK ABSORBER ASSY, REAR	1	PCS	¥19,000
32	180-08-1201	NUT,PREVAILING TORQUE TYPE HEXAGON	1	PCS	¥100
33	120-14-3301	AXIS M12X67	1	PCS	¥500
34	120-14-3401	AXIS M10X50	1	PCS	¥500
35	120-14-3502	RR. STEP ASSY,LEFT BLK	1	PCS	¥4,800
36	120-14-3602	LEFT FOOTREST BLK	1	SET	¥1,700
37	120-14-3702	RR. STEP ASSY,RIGHT BLK	1	PCS	¥5,200
38	120-14-3802	RIGHT FOOTREST BLK	1	SET	¥1,600
39	120-14-3901	T-COLLAR	1	PCS	¥300
40	120-14-4001	T-RUBBER	1	PCS	¥400
41	120-14-4101	SCREW, HEXAGON SOCKET STEP M6X25	4	PCS	¥100
42	120-14-4201	COLLAR 6X11.5	4	PCS	¥300
43	120-14-4301	BRACKET, FENDER COMP. REAR	1	PCS	¥2,400
44	120-14-4401	REAR BRACKET,LOWER AIR GUIDE SLEEVE RIGHT	1	PCS	¥300
45	120-14-4501	REAR BRACKET,LOWER AIR GUIDE SLEEVE LEFT	1	PCS	¥500
46	180-02-2801	BRACKET, SEAT LOCK	1	PCS	¥200

COVER PART (1/4)

GR200RR-15

PICTURE

NO

GPX CODE

ENGLISH DESCRIPTION

QTY

UNIT

PRICE/UNIT
(JPY)



1	120-15-0102	AIR GUIDE SLEEVE COMP.	1	PCS	¥2,700
2	120-15-0202	RIGHT DECORATIVE BLOCK, AIR GUIDE SLEEVE COMP.	1	PCS	¥500
3	120-15-0302	LEFT DECORATIVE BLOCK, AIR GUIDE SLEEVE COMP.	1	PCS	¥500
4	120-15-0401	LIGHT SHIELD, RIGHT	1	PCS	¥400
5	120-15-0501	LIGHT SHIELD, LEFT	1	PCS	¥400
6	120-15-0601	CLIP, EXPANSION2	4	PCS	¥100
7	120-15-0702	GLASS,AIR GUIDE SLEEVE COMP.	1	PCS	¥4,300
8	120-15-0802-BLK	DECORATIVE COVER,AIR GUIDE SLEEVE COMP.-BLK	1	PCS	¥5,500
8	120-15-0802-WHT	DECORATIVE COVER,AIR GUIDE SLEEVE COMP.-WHT	1	PCS	¥5,500
8	120-15-0802-YEL	DECORATIVE COVER,AIR GUIDE SLEEVE COMP.-YELLOW	1	PCS	¥5,500
9	120-15-0901	DECORATIVE COVER, IGNITION LOCK	1	PCS	¥400
10	120-15-1001	LINK BLOCK, WIND BOARD	1	PCS	¥1,300
11	120-15-1101	CLIP, EXPANSION1	5	PCS	¥300
12	120-15-1201	DECORATIVE COVER, METER	1	PCS	¥3,800
13	120-15-1301	BASE, FUEL TANK COVER	1	PCS	¥400
14	120-15-1401	RIGHT DECORATIVE BLOCK, FRAME	1	PCS	¥500
15	120-15-1501	LEFT DECORATIVE BLOCK, FRAME	1	PCS	¥500
16	120-15-1602-BLK	WIND BOARD,RIGHT-BLK (FOR BLACK BIKE)	1	PCS	¥17,000
16	120-15-1602-WHT	WIND BOARD,RIGHT-RED (FOR WHITE BIKE)	1	PCS	¥17,000
16	120-15-1602-YEL	WIND BOARD,RIGHT-GRY (FOR YELLOW BIKE)	1	PCS	¥17,000
17	120-15-1702-BLK	WIND BOARD,LEFT-BLK (FOR BLACK BIKE)	1	PCS	¥17,000
17	120-15-1702-WHT	WIND BOARD,LEFT-RED (FOR WHITE BIKE)	1	PCS	¥17,000
17	120-15-1702-YEL	WIND BOARD,LEFT-GRY (FOR YELLOW BIKE)	1	PCS	¥17,000
18	120-15-1802-BLK	COVER,FUEL TANK DECORATIVE-KAVLAR-MATT BLK (FOR BLACK BIKE) GR200RR	1	PCS	¥8,500
18	120-15-1802-WHT	COVER,FUEL TANK DECORATIVE-KAVLAR-RED (FOR WHITE BIKE) GR200RR	1	PCS	¥8,500
18	120-15-1802-YEL	COVER,FUEL TANK DECORATIVE-KAVLAR-SOLID GRY (FOR YELLOW BIKE) GR200F	1	PCS	¥8,500

COVER PART (2/4)

GR200RR-15

PICTURE

NO

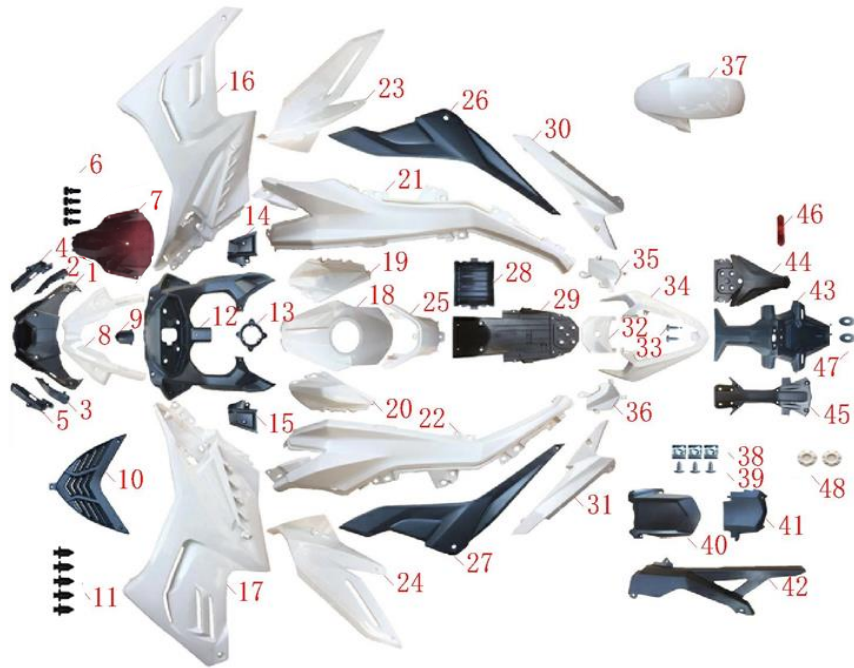
GPX CODE

ENGLISH DESCRIPTION

QTY

UNIT

PRICE/UNIT
(JPY)



19	120-15-1902-BLK	COVER,FUEL TANK RIGHT DECORATIVE-MATT BLK (FOR BLACK BIKE) GR200RR	1	PCS	¥4,300
19	120-15-1902-WHT	COVER,FUEL TANK RIGHT DECORATIVE-RED (FOR WHITE BIKE) GR200RR	1	PCS	¥4,300
19	120-15-1902-YEL	COVER,FUEL TANK RIGHT DECORATIVE-GRY (FOR YELLOW BIKE) GR200RR	1	PCS	¥4,300
20	120-15-2002-BLK	COVER,FUEL TANK LEFT DECORATIVE-MATT BLK (FOR BLACK BIKE) GR200RR	1	PCS	¥4,300
20	120-15-2002-WHT	COVER,FUEL TANK LEFT DECORATIVE-RED (FOR WHITE BIKE) GR200RR	1	PCS	¥4,300
20	120-15-2002-YEL	COVER,FUEL TANK LEFT DECORATIVE-GRY (FOR YELLOW BIKE) GR200RR	1	PCS	¥4,300
21	120-15-2102-BLK	COVER, RIGHT BODY-BLK (FOR BLACK BIKE)	1	PCS	¥4,700
21	120-15-2102-WHT	COVER, RIGHT BODY-WHT (FOR WHITE BIKE)	1	PCS	¥4,700
21	120-15-2102-YEL	COVER, RIGHT BODY-YELLOW (FOR YELLOW BIKE)	1	PCS	¥4,700
22	120-15-2202-BLK	COVER, LEFT BODY-BLK (FOR BLACK BIKE)	1	PCS	¥4,700
22	120-15-2202-WHT	COVER, LEFT BODY-WHT (FOR WHITE BIKE)	1	PCS	¥4,700
22	120-15-2202-YEL	COVER, LEFT BODY-YELLOW (FOR YELLOW BIKE)	1	PCS	¥4,700
23	120-15-2302-BLK	DECORATIVE COVER, RIGHT WINDSHIELD-BLK (FOR BLACK BIKE)	1	PCS	¥5,300
23	120-15-2302-WHT	DECORATIVE COVER, RIGHT WINDSHIELD-WHT (FOR WHITE BIKE)	1	PCS	¥5,300
23	120-15-2302-YEL	DECORATIVE COVER, RIGHT WINDSHIELD-YELLOW (FOR YELLOW BIKE)	1	PCS	¥5,300
24	120-15-2402-BLK	DECORATIVE COVER,LEFT WINDSHIELD-BLK (FOR BLACK BIKE)	1	PCS	¥5,300
24	120-15-2402-WHT	DECORATIVE COVER,LEFT WINDSHIELD-WHT (FOR WHITE BIKE)	1	PCS	¥5,300
24	120-15-2402-YEL	DECORATIVE COVER,LEFT WINDSHIELD-YELLOW (FOR YELLOW BIKE)	1	PCS	¥5,300
25	120-15-2501-BLK	COVER,FUEL TANK REAR DECORATIVE	1	PCS	¥2,600
25	120-15-2502-RED-LTD	COVER,FUEL TANK REAR DECORATIVE	1	PCS	¥2,600
25	120-15-2502-BLK-LTD	COVER,FUEL TANK REAR DECORATIVE	1	PCS	¥2,600
26	120-15-2601	COVER, RIGHT SIDE	1	PCS	¥1,300
27	120-15-2701	COVER, LEFT SIDE	1	PCS	¥1,300
28	120-15-2801	BATTERY CASE	1	PCS	¥900
29	120-15-2901	INNER PLATE,REAR FENDER	1	PCS	¥1,700


COVER PART (3/4)

GR200RR-15

PICTURE	NO	GPX CODE	ENGLISH DESCRIPTION	GR200RR-15		PRICE/UNIT (JPY)
				QTY	UNIT	
	30	120-15-3003-BLK	REAR BODY COVER, RIGHT-BLK (FOR BLACK BIKE) GR200RR	1	PCS	¥3,200
	30	120-15-3002-WHT	REAR BODY COVER, RIGHT-WHT (FOR WHITE BIKE) GR200RR	1	PCS	¥3,200
	30	120-15-3002-YEL	REAR BODY COVER, RIGHT-YELLOW (FOR YELLOW BIKE) GR200RR	1	PCS	¥3,200
	31	120-15-3103-BLK	REAR BODY COVER, LEFT-BLK (FOR BLACK BIKE) GR200RR	1	PCS	¥3,200
	31	120-15-3102-WHT	REAR BODY COVER, LEFT-WHT (FOR WHITE BIKE) GR200RR	1	PCS	¥3,200
	31	120-15-3102-YEL	REAR BODY COVER, LEFT-YELLOW (FOR YELLOW BIKE) GR200RR	1	PCS	¥3,200
	32	120-15-3202-BLK	LINK BLOCK, TAIL SHIELD-MATT BLK (FOR BLACK BIKE) GR200RR	1	PCS	¥1,600
	32	120-15-3202-RED	LINK BLOCK, TAIL SHIELD-RED (FOR WHITE BIKE) GR200RR	1	PCS	¥1,600
	32	120-15-3202-YEL	LINK BLOCK, TAIL SHIELD-GRY (FOR YELLOW BIKE) GR200RR	1	PCS	¥1,600
	33	120-15-3301	SCREW,CROSS RECESSED PAN SELF-TAPPING 4.2X16	2	PCS	¥100
	34	120-15-3402-BLK	SHIELD COMP.,TAIL-BLK (FOR BLACK BIKE) GR200RR	1	PCS	¥5,000
	34	120-15-3402-WHT	SHIELD COMP.,TAIL-WHT (FOR WHITE BIKE) GR200RR	1	PCS	¥5,000
	34	120-15-3402-YEL	SHIELD COMP.,TAIL-YELLOW (FOR YELLOW BIKE) GR200RR	1	PCS	¥5,000
	35	120-15-3502-BLK	LINK BLOCK, TAIL SHIELD RIGHT-BLK (FOR BLACK BIKE) GR200RR	1	PCS	¥1,200
	35	120-15-3502-WHT	LINK BLOCK, TAIL SHIELD RIGHT-WHT (FOR WHITE BIKE) GR200RR	1	PCS	¥1,200
	35	120-15-3502-YEL	LINK BLOCK, TAIL SHIELD RIGHT-YELLOW (FOR YELLOW BIKE) GR200RR	1	PCS	¥1,200
	36	120-15-3602-BLK	LINK BLOCK, TAIL SHIELD LEFT-BLK (FOR BLACK BIKE) GR200RR	1	PCS	¥1,200
	36	120-15-3602-WHT	LINK BLOCK, TAIL SHIELD LEFT-WHT (FOR WHITE BIKE) GR200RR	1	PCS	¥1,200
	36	120-15-3602-YEL	LINK BLOCK, TAIL SHIELD LEFT-YELLOW (FOR YELLOW BIKE) GR200RR	1	PCS	¥1,200
	37	120-15-3702-BLK	FENDER COMP.,FRONT-MATT BLK (FOR BLACK BIKE) GR200RR	1	PCS	¥6,400
37	120-15-3702-WHT	FENDER COMP.,FRONT-RED (FOR WHITE BIKE) GR200RR	1	PCS	¥6,400	
37	120-15-3702-YEL	FENDER COMP.,FRONT-GRY (FOR YELLOW BIKE) GR200RR	1	PCS	¥6,400	

COVER PART (4/4)

GR200RR-15

PICTURE	NO	GPX CODE	ENGLISH DESCRIPTION	GR200RR-15		
				QTY	UNIT	PRICE/UNIT (JPY)
	38	180-03-3901	NUT,CLIP ST4.2	3	PCS	¥100
	39	180-03-4001	SCREW,CROSS RECESSED PAN SELF-TAPPING 4.2X13	3	PCS	¥100
	40	120-15-4001	PLATE,REAR LOWER FENDER	1	PCS	¥1,100
	41	120-15-4101	INNER PLATE,REAR LOWER FENDER	1	PCS	¥600
	42	120-15-4201	CASE, DRIVE CHAIN	1	PCS	¥1,100
	43	120-15-4301	FENDER COMP., REAR	1	PCS	¥1,900
	44	120-15-4401	TAIL SHIELD, REAR	1	PCS	¥1,200
	45	120-15-4501	BLOCK, FENDER, REAR DECORATIVE	1	PCS	¥1,200
	46	CR5-35-06	REFLECTOR,REAR	1	PCS	¥500
	47	DEM-26-20	FLAT WASHER M6	2	PCS	¥100
	48	120-15-4801-BLK	CAP,FRAME DECORATIVE	2	PCS	¥1,100

FRONT FORK KIT/STEM SET, STEERING (1/2)

GR200RR-16

PICTURE	NO	GPX CODE	ENGLISH DESCRIPTION	GR200RR-16		PRICE/UNIT (JPY)
				QTY	UNIT	
	1	120-16-0101	MIRROR,RIGHT REAR VIEW	1	PCS	¥3,200
	2	120-16-0201	MIRROR,LEFT REAR VIEW	1	PCS	¥3,200
	3	120-16-0301	BRACE, REAR VIEW MIRROR	2	SET	¥1,100
	4	120-16-0401	WEIGHT,LEFT HANDLE	2	SET	¥1,300
	5	180-01-0701	GREASER COMP.	1	PCS	¥700
	6	CR5-17-06	GRIP SET,HANDLE	1	PCS	¥900
	7	LEG-36-07	SCREW,CROSS RECESSED PAN M6X16	2	PCS	¥100
	8	120-16-0801	BALANCE SHAFT ASSY	2	PCS	¥1,600
	9	120-16-0901	SCREW,HEXAGON SOCKET M5X12	2	PCS	¥100
	10	120-16-1001	DECORATIVE COVER	2	PCS	¥200
	11	120-16-1101	STEERING HANDLE PIPE, RIGHT	1	PCS	¥6,800
	12	120-16-1201	STEERING HANDLE PIPE, LEFT	1	PCS	¥6,800
	13	120-16-1301	SCREW,HEXAGON SOCKET M6X20	2	PCS	¥100
	14	120-16-1401	SCREW,HEXAGON SOCKET M8X20	2	PCS	¥100
	15	120-16-1501	SCREW,HEXAGON SOCKET M8X25	2	PCS	¥100
	16	K2150A070	SCREW,HEXAGON SOCKET M8X30	2	PCS	¥100
	17	120-16-1701	UPPER CONNECTIVE PLATE ASSY.	1	PCS	¥7,600
	18	120-16-1801-TH	PLUG	1	PCS	¥200
	19	120-16-1901	LEVER COMP.,LEFT STEERING HANDLE	1	PCS	¥1,600
	23	120-16-2302	SHOCK ABSORBER ASSY.,RIGHT FRONT-RED for NON-ABS	1	PCS	¥41,000
	24	120-16-2401	OIL SEAL, FR.SHOCK ABSORBER	2	PCS	¥700
	25	120-16-2501	MAT,FLAT M6	2	PCS	¥500

FRONT FORK KIT/STEM SET, STEERING (2/2)

GR200RR-16

PICTURE

NO

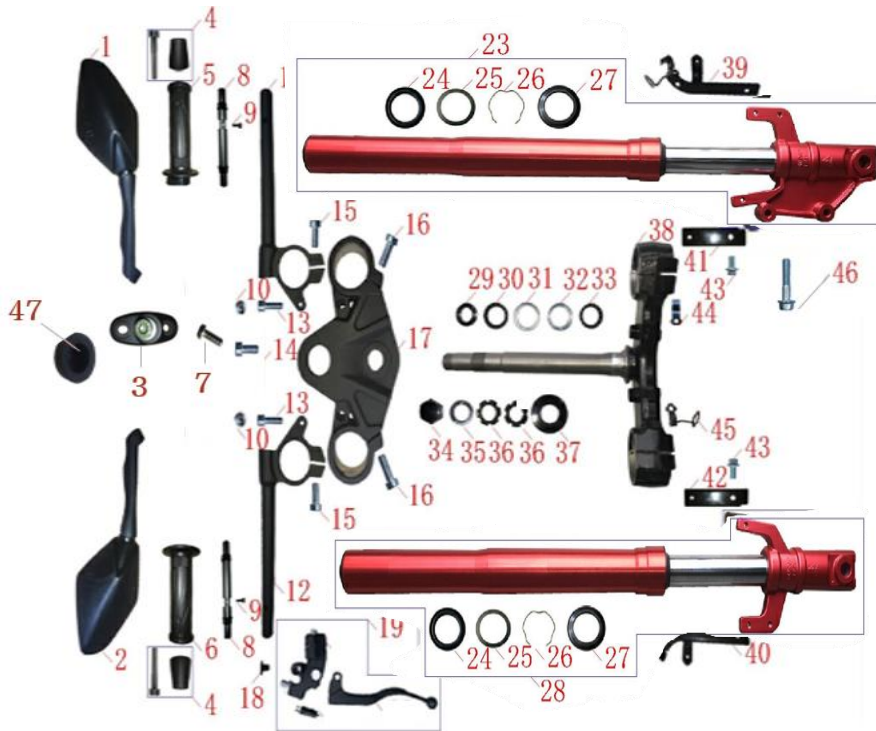
GPX CODE

ENGLISH DESCRIPTION

QTY

UNIT

PRICE/UNIT
(JPY)



26	120-16-2601	OIL SEAL COLLAR	2	PCS	¥400
27	120-16-2701	DUST COVER	2	PCS	¥600
28	120-16-2802	SHOCK ABSORBER ASSY.,LEFT FRONT-RED for NON-ABS	1	PCS	¥41,000
29	180-07-2301	RACE,STEERING TOP CONE	1	PCS	¥400
30	180-07-2201	BALL SET,STEEL TOP	1	PCS	¥200
31	180-07-2101	RACE,STEERING TOP BOWL	1	PCS	¥400
32	180-07-2001	RACE,STEERING BOTTOM BOWL	1	PCS	¥400
33	180-07-1901	BALL SET,STEEL BOTTOM	1	PCS	¥200
34	180-07-1201	CAP NUT, STEM COMP. STEERING	1	PCS	¥400
35	180-07-1101	WASHER,STEM COMP.STEERING	1	PCS	¥100
36	180-07-0901	ADJUSTING NUT,STEM COMP. STEERING	2	PCS	¥300
37	180-07-1001	DUST CAP,STEM COMP. STEERING	1	PCS	¥300
38	120-16-3801	STEM COMP.,STEERING	1	SET	¥11,000
39	120-16-3901	BRACKET, TUBE, FRONT DISC BRAKE	1	PCS	¥700
40	120-16-4001	BRACKET, SPEED COUNTER	1	PCS	¥700
41	180-07-3401	BRACKET, FRONT FENDER RIGHT	1	PCS	¥300
42	180-07-0601	BRACKET, FRONT FENDER LEFT	1	PCS	¥300
43	CR5-35-08	BOLT,HEXAGON FLANGE M6X12	2	PCS	¥100
44	120-16-4401	CLAMP, TUBE, FRONT DISC BRAKE	1	PCS	¥400
45	120-16-4501	CLAMP, SPEED COUNTER	1	PCS	¥300
46	120-16-4601	BOLT,HEXAGON FLANGE M8X40	2	PCS	¥100
47	120-16-4701-TH	PLUG	2	PCS	¥200

FUEL TANK

GR200RR-17

PICTURE

NO

GPX CODE

ENGLISH DESCRIPTION

QTY

UNIT

PRICE/UNIT
(JPY)



1	LEG-15-10	BOLT,HEXAGON FLANGE M8X20	1	PCS	¥100
2	180-09-3101	FLAT WASHER M8	1	PCS	¥100
3	120-17-0301	BRACE, FUEL TANK FRONT	1	PCS	¥700
4	180-10-0501	NUT,HEXAGON FLANGE M6	2	PCS	¥100
5	120-17-0501	FLAT WASHER M6 X Ø22	2	PCS	¥100
6	120-17-0601	I-RUBBER	4	PCS	¥200
7	120-17-0701	COLLAR 6.5×17	2	PCS	¥200
8	120-17-0801	FUEL SENSOR	1	SET	¥2,200
9	120-17-0901	GASKET,FUEL SENSOR	1	PCS	¥1,300
10	120-17-3201	FUEL FILTER	1	PCS	¥1,600
11	180-10-1501	RUBBER, FUEL FILTER	1	PCS	¥100
12	180-10-1801	TUBE,FUEL	1	PCS	¥400
13	120-17-1301	FUEL TANK	1	PCS	¥25,000
14	180-09-3401	SCREW,DISC HEXAGON SOCKET M6X12	4	PCS	¥100
15	120-17-1502	BRACKET ASSY.,ELECTRIC FUEL PUMP	1	PCS	¥20,000
16	120-17-1602	ELECTRIC FUEL PUMP	1	SET	¥17,000
17	120-17-1701	GASKET, FUEL PUMP	1	PCS	¥1,300
18	120-17-1801	BRACKET,FUEL PUMP	1	PCS	¥2,200
19	180-10-0101	NUT,HEXAGON FLANGE M5	8	PCS	¥100
20	120-17-2001	TUBE,FUEL	1	PCS	¥2,600
21	120-17-2102	TUBE,FUEL	1	PCS	¥2,700
22	120-17-2201	FUEL EVAPORATION COMP.	1	SET	¥3,500
23	120-17-2301	DUMP VALVE	1	PCS	¥800
24	120-17-2401	CANISTER	1	PCS	¥2,000
25	180-03-2801	SCREW, HEXAGON SOCKET STEP M6X12	1	PCS	¥100
26	120-17-2601	FLAT WASHER M12	2	PCS	¥100
27	120-17-2701	COLLAR 6.5X21	2	PCS	¥500
28	120-17-2801	SCREW,DISC HEXAGON SOCKET M6X16	4	PCS	¥100
29	120-17-2901	BRACE, FUEL TANK REAR	1	PCS	¥1,600
30	120-17-3001	BOLT,HEXAGON FLANGE M6X35	2	PCS	¥100
31	120-17-3101	BRACKET, CANISTER	1	PCS	¥500

REAR HANGER SYSTEM (1/2)

GR200RR-18

PICTURE

NO

GPX CODE

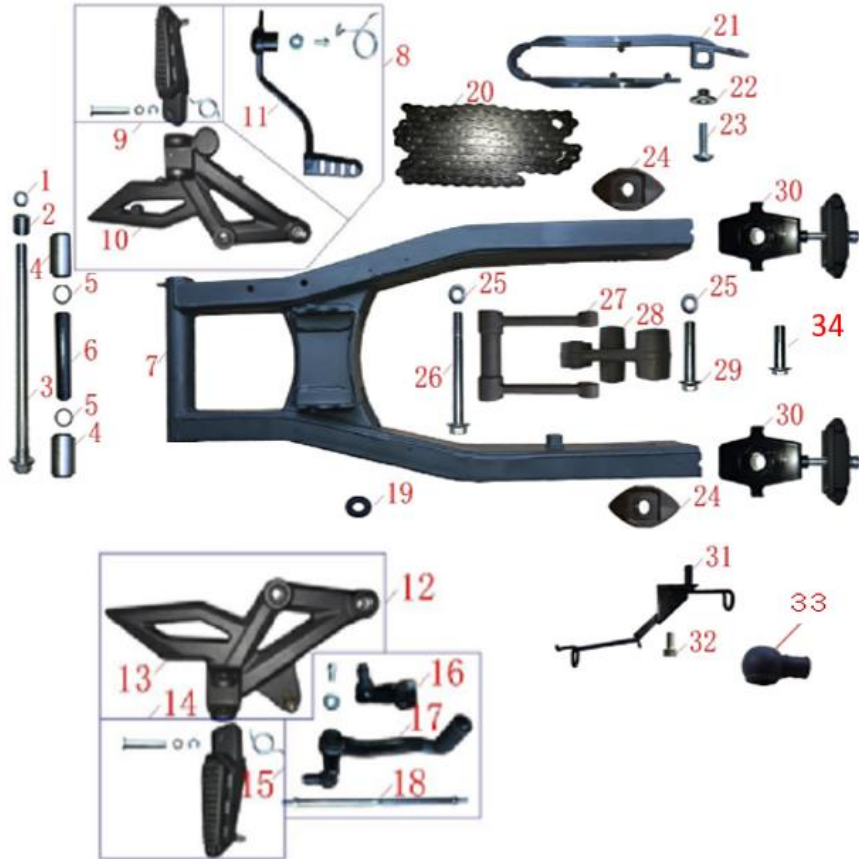
ENGLISH DESCRIPTION

QTY

UNIT

PRICE/UNIT
(JPY)

1	180-04-0201	NUT,PREVAILING TORQUE TYPE HEXAGON	1	PCS	¥200
2	120-18-0201	COLLAR 14X19.5	1	PCS	¥900
3	120-18-0301	AXIS M14X258	1	PCS	¥1,200
4	120-18-0401	BUSH,REAR FORK CUSHION	2	PCS	¥600
5	120-18-0501	RETAINER	2	PCS	¥100
6	120-18-0601	COLLAR	1	PCS	¥600
7	120-18-0701-GW	SWING ARM WELDING ASSY WITHOUT	1	PCS	¥22,000
8	120-18-0802	FR. STEP ASSY.,RIGHT-BLK	1	SET	¥14,000
9	120-18-0902	RIGHT ANKLE- BLK	1	SET	¥2,600
10	120-18-1002	FR. STEP BODY,RIGHT BLK	1	PCS	¥5,500
11	120-18-1101	BRAKE PEDAL	1	SET	¥4,800
12	120-18-1202	FR. STEP ASSY.,LEFT-BLK	1	SET	¥15,000
13	120-18-1302	FR. STEP BODY,LEFT-BLK	1	SET	¥5,300
14	120-18-1402	LEFT ANKLE -BLK	1	SET	¥2,600
15	120-18-1502	PEDAL,GEAR CHANGE	1	SET	¥6,800
16	120-18-1601	SPLINE FITTING	1	SET	¥1,100
17	120-18-1701	BODY,GEAR CHANGE PEDAL	1	SET	¥600
18	120-18-1802	ADJUSTING ROD, DOUBLE THREAD	1	SET	¥4,700
19	180-05-1401	I-RUBBER	1	PCS	¥100
20	120-18-2001-TH	CHAIN, DRIVIE	1	PCS	¥8,000
21	120-18-2101	SLIDER,DRIVE CHAIN	1	PCS	¥3,000
22	120-18-2201	COLLAR 6X8	1	PCS	¥200
23	K2009A004	SCREW,DISC HEXAGON SOCKET M6X20	1	PCS	¥200
24	120-18-2401	PLATE, ADJUSTER HANGER	2	PCS	¥1,100
25	CR5-39-10	NUT,PREVAILING TORQUE TYPE HEXAGON	2	PCS	¥100



REAR HANGER SYSTEM (2/2)

GR200RR-18

PICTURE	NO	GPX CODE	ENGLISH DESCRIPTION	QTY	UNIT	PRICE/UNIT (JPY)
	26	120-18-2601	AXIS M10X123	1	PCS	¥600
	27	120-18-2701	SMALL CRADLE ASSY	1	SET	¥11,000
	28	120-18-2801	BIG CRADLE ASSY	1	SET	¥12,000
	29	120-18-2902	AXIS M10×105	1	PCS	¥500
	30	120-18-3001	ADJUSTER, DRIVE CHAIN LEFT	2	SET	¥2,400
	31	120-18-3101	BRACKET,TUBE, REAR DISC BRAKE	1	PCS	¥700
	32	180-06-3001	SCREW,HEXAGON SOCKET M6X12	1	PCS	¥100
	33	120-18-3301-TH	DUST COVER	2	PCS	¥100
	34	120-18-2901	AXIS M10X67	1	PCS	¥500

FRONT WHEEL				GR200RR-19		
PICTURE	NO	GPX CODE	ENGLISH DESCRIPTION	QTY	UNIT	PRICE/UNIT (JPY)
	1	120-19-0101-BLK	WHEEL,FRONT-BLACK	1	PCS	¥27,000
	1	120-19-0101-RED	WHEEL,FRONT-RED	1	PCS	¥27,000
	2	120-19-0201	BEARING	2	PCS	¥700
	3	120-19-0301	COLLAR	1	PCS	¥500
	4	120-19-0401	OIL SEAL	1	PCS	¥200
	5	180-04-3101	VALVE CORE SET	1	PCS	¥200
	6	120-19-0601-TH	FRONT TYRE	1	PCS	¥19,000
	6	120-19-0602-TH-LTD	FRONT TYRE LTD 100/80-17 LTD	1	PCS	¥23,000
	6	120-19-0603-TH	FRONT TYRE IRC 100/80-17	1	PCS	¥23,000
	7	120-19-0701	SPEED COUNTER	1	PCS	¥3,200
	8	180-04-0201	NUT,PREVAILING TORQUE TYPE HEXAGON	1	PCS	¥200
	9	120-19-0901	COLLAR 15X32	1	PCS	¥500
	10	120-19-1001	AXIS M15X262	1	PCS	¥1,300
	11	120-19-1102	FR.DISC PLATE	1	PCS	¥6,600
	12	CR5-21-10	BINDING BOLT,BRAKE DISK M8X25	5	PCS	¥100
	13	120-19-1301	CALIPER ASSY,FRONT DISC BRAKE	1	SET	¥18,000
	14	120-19-1401	HANDLE,LEFT FRONT BRAKE	1	PCS	¥1,100
	15	120-19-1501	SWITCH,LEFT FRONT BRAKE	1	PCS	¥500
	16	120-19-1601	BASE,REAR DISC-BRAKE CYLINDER	1	PCS	¥4,700
	17	120-19-1701	FUEL TUBE,FRONT DISC-BRAKE	1	SET	¥1,800
	18	120-19-1801	BINDING BOLT,FRONT DISC-BRAKE FUEL TUBE	2	PCS	¥200
	19	120-19-1901	COPPER WASHER	4	PCS	¥100
20	120-19-2001	CONNECTING BRACKET, FRONT DISC-BRAKE	1	PCS	¥1,400	
21	120-19-2101	SHOE,FRONT DISC BRAKE	1	SET	¥3,200	
22	120-19-2201	CALLIPER, REAR DISC-BRAKE	1	SET	¥5,500	

REAR WHEEL ASSY., REAR/DISC-BRAKE COMP. (1/2)

GR200RR-20

PICTURE

NO

GPX CODE

ENGLISH DESCRIPTION

QTY

UNIT

PRICE/UNIT
(JPY)

1	120-20-0101-BLK	WHEEL,REAR-BLACK	1	PCS	¥32,000
1	120-20-0101-RED	WHEEL,REAR-RED	1	PCS	¥32,000
2	120-20-0201	BUFFER BLOCK, REAR WHEEL (SET- 6 PCS)	1	SET	¥2,200
3	120-20-0301	BEARING	2	PCS	¥700
4	120-20-0401	COLLAR	1	PCS	¥500
5	120-20-0501	OIL SEAL	1	PCS	¥200
6	180-04-3101	VALVE CORE SET	1	PCS	¥200
7	120-20-0701-TH	REAR TYRE Vee Rubber	1	PCS	¥25,000
7	120-20-0702-TH-LTD	REAR TYRE 140/70-17 LTD Perilli	1	PCS	¥32,000
7	120-20-0703-TH	REAR TYRE IRC 140/70-17	1	PCS	¥32,000
8	120-20-0801	RR.DISC PLATE	1	PCS	¥5,500
9	CR5-21-10	BINDING BOLT,BRAKE DISK M8X25	4	PCS	¥100
10	120-20-1002	REAR SPROCKET	1	PCS	¥8,900
11	120-20-1101	COLLAR	1	PCS	¥400
12	120-20-1201	OIL SEAL 28-42-7	1	PCS	¥100
13	120-20-1301	BEARING 6202	1	PCS	¥700
14	120-20-1401	HEXAGON NUT	6	PCS	¥100
15	120-20-1501	HEXAGON BOLT	6	PCS	¥100
16	120-20-1601	REAR SPROCKET BODY	1	PCS	¥3,200
17	120-20-1701	LOCKING PLATE, SPROCKET DISC	2	PCS	¥100
18	120-20-1802	SPROCKET DISC	1	PCS	¥4,300
19	180-04-0201	NUT,PREVAILING TORQUE TYPE HEXAGON	1	PCS	¥200
20	120-20-2001	COLLAR 15X21	1	PCS	¥600
21	120-20-2101	COLLAR 15X16	1	PCS	¥500
22	120-20-2201	AXIS M15X314	1	PCS	¥1,600
23	120-20-2302	CALIPER ASSY,REAR DISC BRAKE	1	SET	¥23,000
24	120-20-2401	CYLINDER.,REAR DISC-BRAKE	1	SET	¥3,000
25	120-20-2501	BRAKE FLUID RESERVOIR TANK	1	SET	¥1,000
26	120-20-2602	FUEL TUBE,BRAKE FLUID RESERVOIR TANK	1	SET	¥1,000
27	120-20-2701	SWITCHING LINE, REAR DISC-BRAKE	1	PCS	¥1,700
28	120-20-2801	FUEL TUBE,REAR DISC-BRAKE	1	PCS	¥2,200
29	120-20-2901	BINDING BOLT,REAR DISC-BRAKE FUEL TUBE	1	PCS	¥100
30	120-19-1901	COPPER WASHER	4	PCS	¥100



REAR WHEEL ASSY., REAR/DISC-BRAKE COMP. (2/2)

GR200RR-20

PICTURE	NO	GPX CODE	ENGLISH DESCRIPTION			PRICE/UNIT	
				QTY	UNIT	(JPY)	
<p>An exploded view diagram of a rear wheel and disc brake assembly. The components are numbered as follows: 1. Tire tread pattern; 2. Tire valve core; 3. Tire sealant; 4. Tire tube; 5. Tire inner tube; 6. Tire mounting cap; 7. Tire; 8. Brake disc; 9. Brake disc mounting tabs; 10. Brake disc mounting plate; 11. Brake disc mounting nut; 12. Brake disc mounting washer; 13. Brake disc mounting bolt; 14. Brake disc mounting pin; 15. Brake disc mounting pin; 16. Brake disc mounting pin; 17. Brake disc mounting pin; 18. Brake disc mounting pin; 19. Brake disc mounting pin; 20. Brake disc mounting pin; 21. Brake disc mounting pin; 22. Brake disc mounting pin; 23. Brake disc mounting pin; 24. Brake calliper bracket; 25. Brake calliper bracket; 26. Brake calliper bracket; 27. Brake calliper bracket; 28. Brake calliper bracket; 29. Brake calliper bracket; 30. Brake calliper bracket; 31. Brake calliper bracket; 32. Brake calliper bracket; 33. Brake calliper bracket.</p>	31	120-20-3101	CALLIPER, REAR DISC-BRAKE	1	SET	¥5,100	
	32	120-20-3201	SHOE,REAR DISC BRAKE	1	SET	¥3,800	
	33	120-20-3301	CONNECTING BRACKET, REAR DISC-BRAKE	1	PCS	¥3,200	

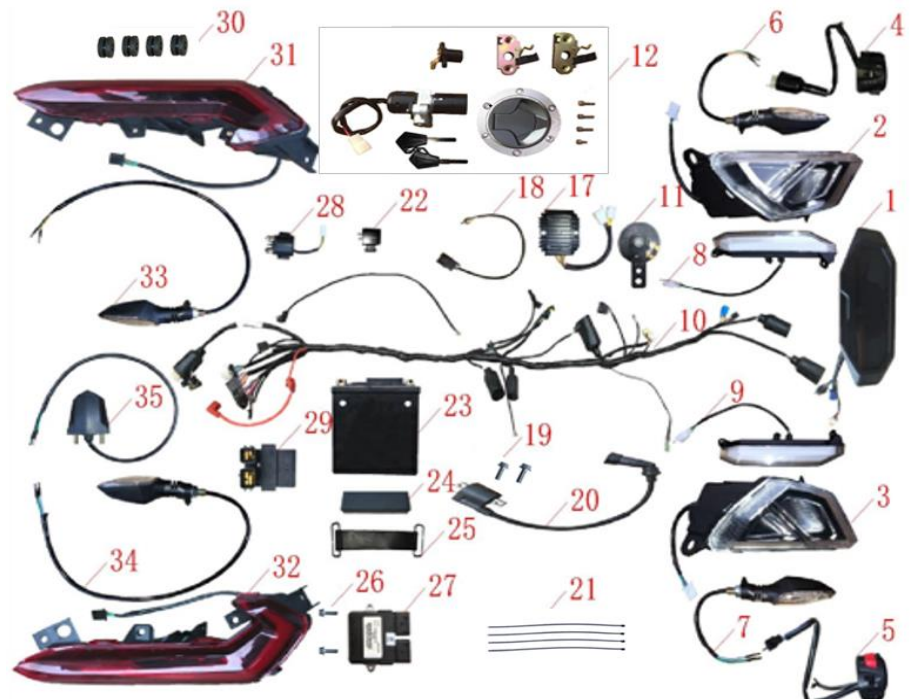
MAIN WIREHARNES AND ELETRIC PARTS (1/2)

GR200RR-21

PICTURE	NO	GPX CODE	ENGLISH DESCRIPTION	QTY	UNIT	PRICE/UNIT (JPY)	
	1	120-21-0102	METER ASSY.for NON-ABS	1	SET	¥34,000	
	2	120-21-0201	L.HEAD LIGHT ASSY.	1	PCS	¥17,000	
	3	120-21-0301	R.HEAD LIGHT ASSY.	1	PCS	¥17,000	
	4	120-21-0401	SWITCH ASSY.,LEFT	1	PCS	¥4,500	
	5	120-21-0501	SWITCH ASSY.,RIGHT	1	PCS	¥4,000	
	6	120-21-0601	SIGNAL ASSY.,LEFT FRONT TURN	1	PCS	¥3,000	
	7	120-21-0701	SIGNAL ASSY.,RIGHT FRONT TURN	1	PCS	¥3,000	
	8	120-21-0801	DAY LIGHT,LEFT	1	PCS	¥5,500	
	9	120-21-0901	DAY LIGHT,RIGHT	1	PCS	¥5,500	
	10	120-21-1002	HARNES, WIRE	1	SET	¥32,000	
	11	120-21-1101-TH	HORN	1	PCS	¥1,600	
	12	120-21-1201	LOCK KIT	1	SET	¥12,000	
	17	120-21-1701	RECTIFIER REGULATE ASSY.	1	PCS	¥3,000	
	18	120-21-1801	OXYGEN SENSOR	1	PCS	¥15,000	
	19	CR5-35-13	BOLT,HEXAGON FLANGE M6X16	2	PCS	¥100	
	20	120-21-2002	COIL ASSY.,IGNITION	1	PCS	¥3,300	
	21	180-02-0601	BAND	4	PCS	¥100	
	22	180-02-1501	FLASHER	1	PCS	¥900	
	23	120-21-2301-TH	BATTERY ASSY. YTZ8V	1	PCS	¥9,700	
	24	120-21-2401	DAMPING SPONGE	1	PCS	¥100	
	25	120-21-2501-TH	BAND	1	PCS	¥300	
	26	CR5-38-17	BOLT,HEXAGON FLANGE M5X16	2	PCS	¥100	
	27	120-21-2702	ECU	1	PCS	¥47,000	
	28	CR5-38-03	RELAY ASSY.,STARTING	1	PCS	¥1,100	
	29	120-21-2901	BOX, ELECTRIC PARTS	1	PCS	¥8,300	
	30	120-21-3001	I-RUBBER	4	PCS	¥200	

MAIN WIREHARNES AND ELETRIC PARTS (2/2)

GR200RR-21

PICTURE	NO	GPX CODE	ENGLISH DESCRIPTION	QTY	UNIT	PRICE/UNIT (JPY)
	31	120-21-3101	TAIL LIGHT ASSY., LEFT	1	PCS	¥13,000
	32	120-21-3201	TAIL LIGHT ASSY., RIGTH	1	PCS	¥13,000
	33	120-21-3301	SIGNAL ASSY.,LEFT REAR TURN	1	PCS	¥3,000
	34	120-21-3401	SIGNAL ASSY.,RIGHT REAR TURN	1	PCS	¥3,000
	35	112-37-0201	LAMP,REAR REGISTRATION PLATE	1	PCS	¥1,700

STICKER SET

GR200RR-23

PICTURE

NO

GPX CODE

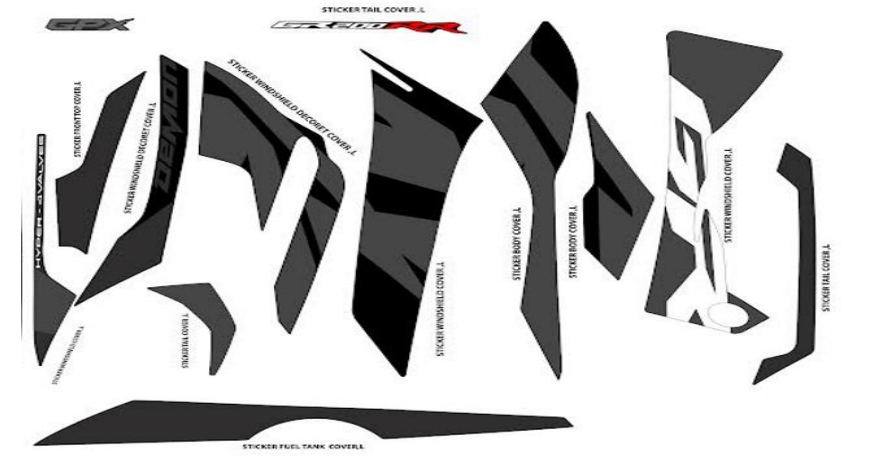
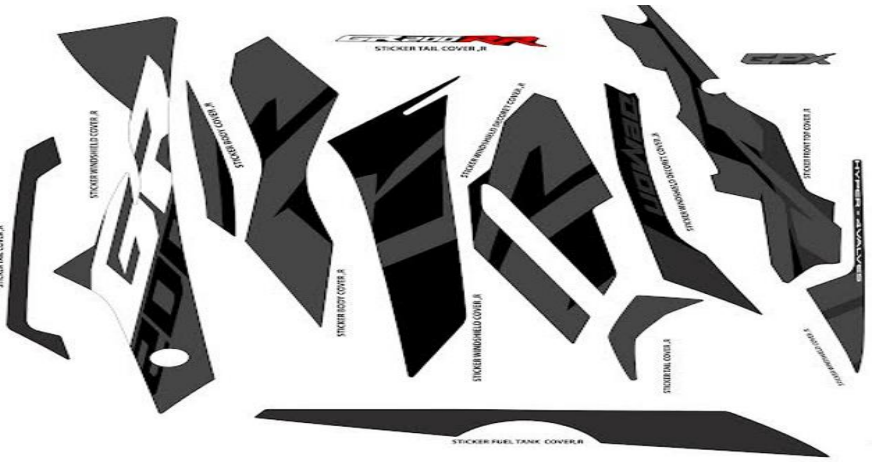
ENGLISH DESCRIPTION

QTY

UNIT

**PRICE/UNIT
(JPY)**

1	120-23-0102-BLK(SET)	STICKER SET FOR BLACK GR200RR	1	SET	¥13,000



STICKER SET					GR200RR-23	
PICTURE	NO	GPX CODE	ENGLISH DESCRIPTION	QTY	UNIT	PRICE/UNIT (JPY)
				1	SET	¥13,000
	1	120-23-0102-YEL(SET)	STICKER SET FOR YELLOW GR200RR	1	SET	¥13,000