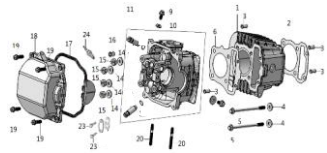




**Make
it POPZ**
สนุกใหม่ สไตล์ป๊อป

ENGINE

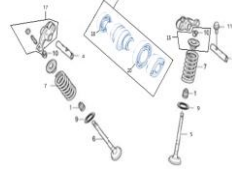
CYLINDER/CYLINDER HEAD P1



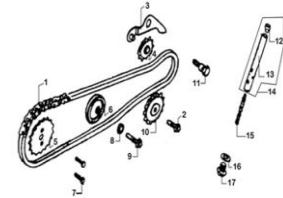
PIPE,IN P2



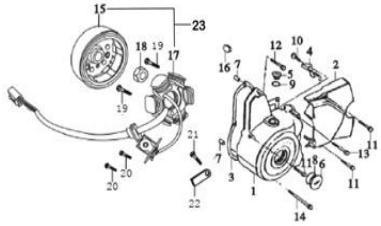
ICAMSHAFT/VALVE P3



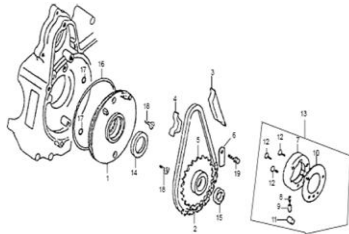
CAM CHAIN/TENSIONER P4



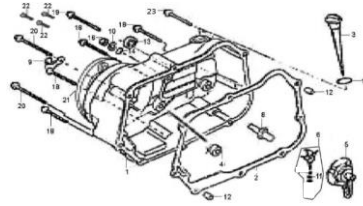
GENERATOR/L, CRANKCASE COVER P5



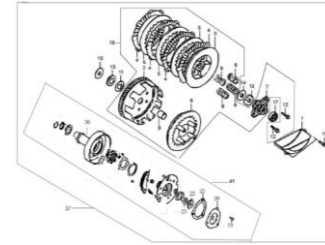
STARTING CLUTCH P6



R. CRANKSHAFT COVER P7



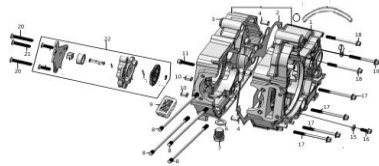
CLUTCH ASSY P8



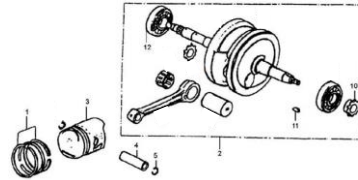
STARTING MOTOR P9



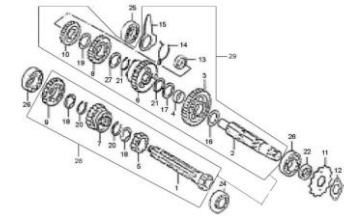
CRANKCASE/OIL PUMP P10



PISTON/CRANKSHAFT P11

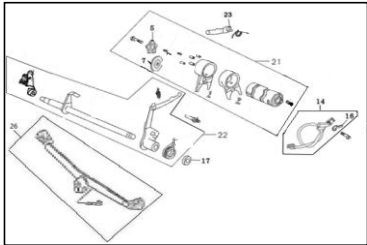


MAINSHAFT/COUNTERSHAFT P12

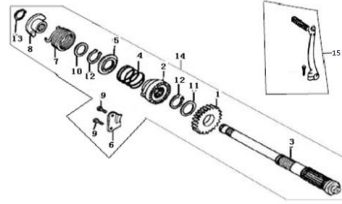


ENGINE

GEARSHIFT DRUM P13



KICK STARTER P14



PIPE,INLET P15



FRAME

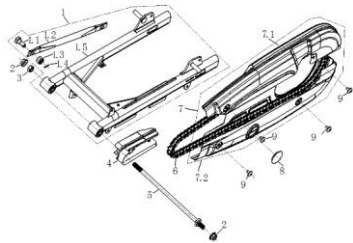
GRIP, SWITCH, CABLE P16	HEADLIGHT ASSEMBLY P17	METER ASSY P18	HANDLE TUBE, HEADLIGHT COVER, FRONT TURN SIGNAL P19
LEFT AND RIGHT WINDSHIELD P20	STEERING STEM P21	FRONT PANEL P22-23	FRONT SHOCK ABSORBER P24
FRONT BREAK BUMP ASSY P25	FRONT WHEEL P26	SEAT CUSHION, REAR P27	FUEL TANK P28

FRAME

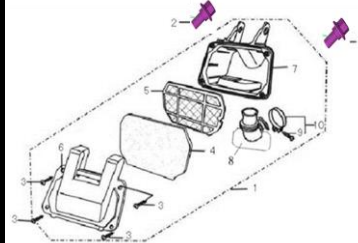
LEFT AND RIGHT BODY P29



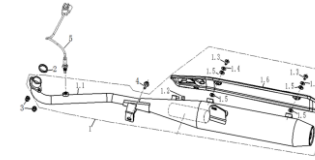
SWING ARM, CHAIN COVER P30



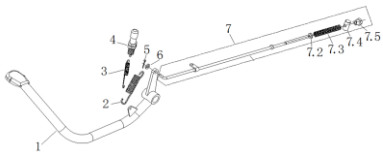
AIR FLITER P31



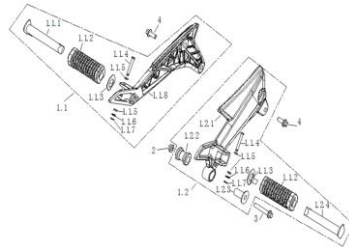
MUFFLER P32



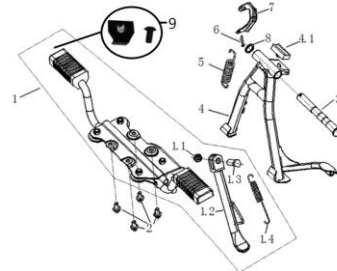
RR. BREAK PEDAL P33



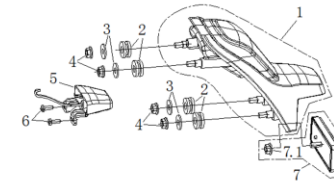
AFTER THE FOOT P34



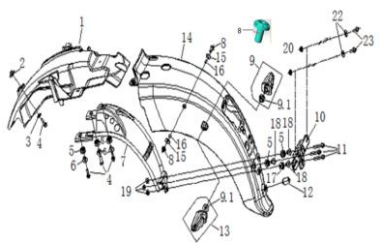
SIDE STAND P35



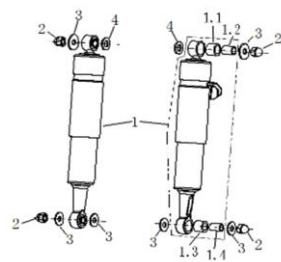
TAIL LIGHT P36



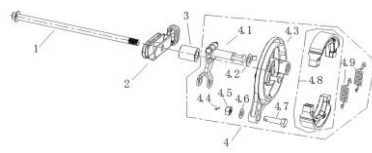
REAR FENDER P37



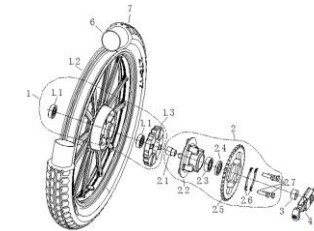
REAR SHOCK ABSORPTION P38



REAR BREAK ASY,(DRUM BRAKE) P39

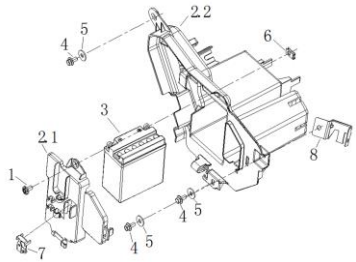


REAR WHEEL P40



FRAME

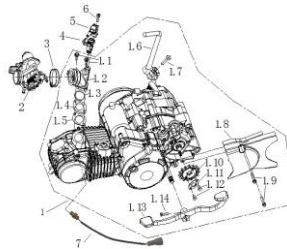
BATTERY P41



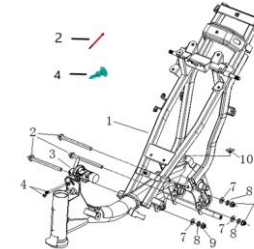
MAIN CABLE P42



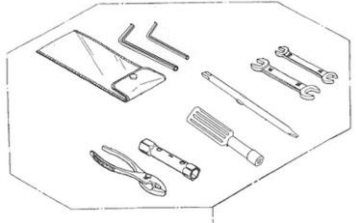
ENGINE P43



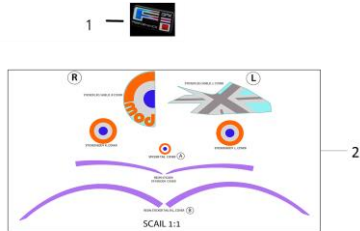
FRAME P44



TRUCK TOOLS P45



General P46



CLUTCH ASSY

ROCK110-08

PICTURE

NO

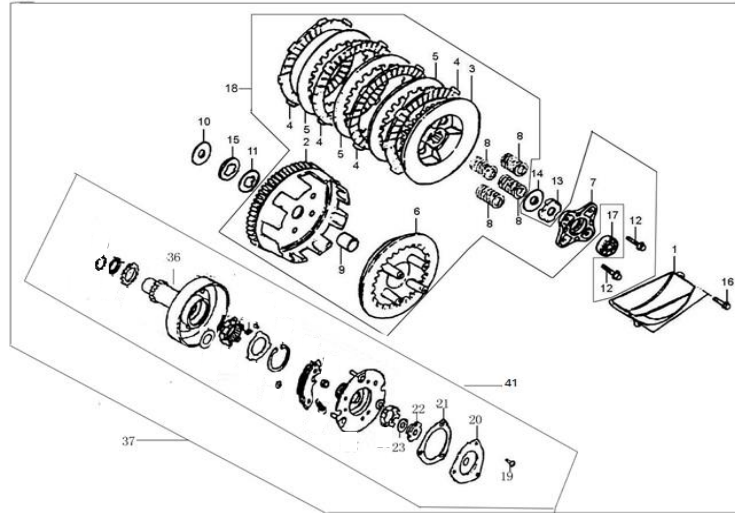
GPX CODE

ENGLISH DESCRIPTION

QTY

UNIT

PRICE/PCS
JPY



1	702-08-0101	PLATE,OIL SEPARATOR	1	PCS	¥700
2	702-08-0201	OUTER COMP,CLUTCH	1	PCS	¥6,300
3	702-08-0301	CENTER COMP,CLUTCH	1	PCS	¥1,100
4	702-08-0401	DISK,CLUTCH FRICTION	4	PCS	¥800
5	702-08-0501	PLATE,CLUTCH	3	PCS	¥400
6	702-08-0601	PLATE,CLUTCH PRESSURE	1	PCS	¥1,700
7	702-08-0701	PLATE,CLUTCH LIFTER	1	PCS	¥1,000
8	702-08-0801	SPRING,CLUTCH	4	PCS	¥300
9	702-08-0901	COLLAR,CLUTCH CENTER21*17	1	PCS	¥400
10	702-08-1001	COLLAR,DISTANCE21.17.2	1	PCS	¥200
11	702-08-1101	SET RING	1	PCS	¥100
12	702-08-1201	BOLT,SPECEAL FLANGE,M6x22	4	PCS	¥100
13	702-08-1301	NUT,LOCK,M14	1	PCS	¥300
14	702-08-1401	DISH WASHERΦ14	1	PCS	¥100
15	702-08-1501	WASHER B,SPLINE	1	PCS	¥200
16	702-08-1601	BOLT,HEX,M6x20	2	PCS	¥100
17	702-08-1701	BALL BEARING,6000	1	PCS	¥700
18	702-08-1801	CLUTCH	1	PCS	¥11,000
19	701-07-2401	SCREW,PAN,M5x6	3	PCS	¥100
20	702-08-2001	COVER,OIL FILTER	1	PCS	¥300
21	702-08-2101	GASKET,OIL FILTER	1	PCS	¥100
22	702-08-2201	NUT B,LOCK,M14x1	1	PCS	¥300
23	702-08-1401	DISH WASHERΦ14	1	PCS	¥100
36	702-08-3601	OUTER ASSY,PRIMARY CLUTCH	1	PCS	¥7,600
37	702-08-3701	CLUTCH ASSY	1	PCS	¥22,000
41	702-08-4101	ONEWAY CLUTCH	1	PCS	¥12,000

STARTING MOTOR

ROCK110-09

PICTURE

NO

GPX CODE

ENGLISH DESCRIPTION

QTY

UNIT

**PRICE/PCS
JPY**

1

702-05-1301

BOLT,FLANGE,M6x50

3

PCS

¥200

2

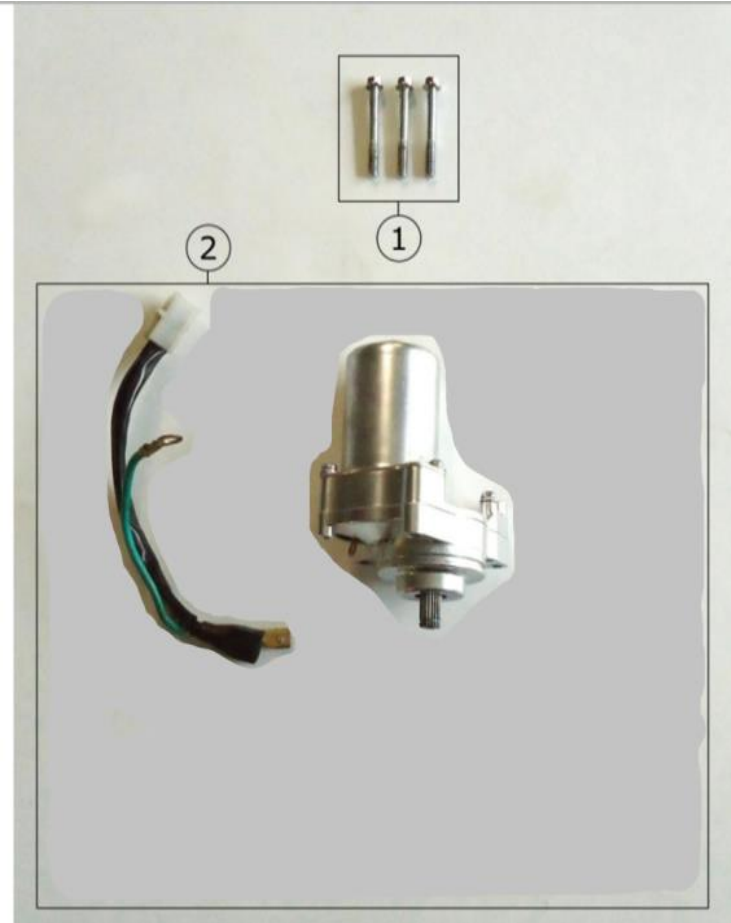
702-09-0201

MOTOR ASSY,STARTER

1

PCS

¥7,500



MAINSHAFT/COUNTERSHAFT

ROCK110-12

PICTURE	NO	GPX CODE	ENGLISH DESCRIPTION	ROCK110-12		
				QTY	UNIT	PRICE/PCS JPY
	1	702-12-0101	MAINSHAFT,TRANSMISSION	1	PCS	¥1,600
	2	702-12-0201	COUNTERSHAFT	1	PCS	¥1,000
	3	702-12-0301	GEAR,COUNTERSHAFT LOW	1	PCS	¥1,300
	4	702-12-0401	BUSH,20x9	1	PCS	¥200
	5	702-12-0501	GEAR,MAINSHAFT SECOND	1	PCS	¥800
	6	702-12-0601	GEAR,COUNTERSHAFT SECOND	1	PCS	¥1,400
	7	702-12-0701	GEAR,MAINSHAFT THIRD	1	PCS	¥1,400
	8	702-12-0801	GEAR,COUNTERSHAFT THIRD	1	PCS	¥1,300
	9	702-12-0901	GEAR,MAINSHAFT FOURTH	1	PCS	¥1,300
	10	702-12-1001	GEAR,COUNTERSHAFT FOURTH	1	PCS	¥1,300
	11	702-12-1101	SPROCKET,DRIVE(428-14T)	1	PCS	¥1,000
	12	702-12-1201	PLATE,FIXING,DRIVE SPROCKET	1	PCS	¥100
	13	702-12-1301	WASHER 12MM	1	PCS	¥100
	14	702-12-1401	SPRING	1	PCS	¥300
	15	702-12-1501	PLATE,GEARSHIFT DRUM LOCK	1	PCS	¥400
	16	702-12-1601	WASHER,17MM	1	PCS	¥200
	17	702-12-1701	WASHER,SPLINE,20MM	1	PCS	¥100
	18	702-12-1801	WASHER,SPLINE,17MM	2	PCS	¥200
	19	702-12-1801	WASHER,SPLINE,17MM	1	PCS	¥200
	20	702-12-2001	CIRCLIP,EXTERNAL,17MM	2	PCS	¥200
	21	702-12-2101	CIRCLIP,EXTERNAL,20MM	2	PCS	¥200
	22	702-12-2201	DRIVE SHAFT OIL SEAL 17x29x5	1	PCS	¥300
	23	702-12-2301	BOLT HEX,M6*8	2	PCS	¥100
	24	702-12-2401	BALL BEARING,6001	1	PCS	¥500
	25	702-12-2501	BALL BEARING,6201	1	PCS	¥500
	26	701-42-0701	BALL BEARING,6203	2	PCS	¥800
	27	702-12-1801	WASHER,SPLINE,17MM	1	PCS	¥200
	28	702-12-2801	MAINSHAFT COMP	1	PCS	¥4,200
	29	702-12-2901	COUNTERSHAFT COMP	1	PCS	¥4,600

LEFT AND RIGHT BODY AND SIDE COVER

POPZ 2021-29

PICTURE	NO	GPX CODE	VER.	ENGLISH DESCRIPTION	QTY (PCS)	UNIT	PRICE/PCS JPY
	1	701-31-0102-SIL	2021	LH SIDE COVER WITH PAINTING SILVER	1	PCS	¥3,800
	2	701-31-0201		SIDE COVER METAL MESH	2	PCS	¥600
	3	701-31-0301		LH SIDE COVER MESH	1	PCS	¥300
	4	701-22-0401		ST4.2×13	9	PCS	¥100
	5	701-31-0402-RED	2021	LH SIDE BODY COVER WITH PAINTING RED	1	PCS	¥7,600
		701-31-0402-SIL	2021	LH SIDE BODY COVER WITH PAINTING SATIN	1	PCS	¥7,600
		701-31-0402-BLK	2021	LH SIDE BODY COVER WITH PAINTING BLACK	1	PCS	¥7,600
		701-31-0402-ORG	2021	LH SIDE BODY COVER WITH PAINTING ORANGE	1	PCS	¥7,600
		701-31-0402-GRN	2021	LH SIDE BODY COVER WITH PAINTING GREEN	1	PCS	¥7,600
	6	701-25-0801		M6×16	7	PCS	¥100
	7	701-31-0501		BUSH Φ6.5×8/Φ18×2+Φ8.5×6	2	PCS	¥300
	8	701-23-1201		RUBBER WASHER	7	PCS	¥100
	9	701-20-0401		BOLT M5×12	3	PCS	¥100
	10	701-22-0501		M5×19	1	PCS	¥100
	11	701-31-0602-SIL	2021	RH SIDE BODY COVER WITH PAINTING SATIN	1	PCS	¥7,200
		701-31-0602-ORG	2021	RH SIDE BODY COVER WITH PAINTING ORANGE	1	PCS	¥7,200
701-31-0602-GRN		2021	RH SIDE BODY COVER WITH PAINTING GREEN	1	PCS	¥7,200	
701-31-0602-RED		2021	RH SIDE BODY COVER WITH PAINTING RED	1	PCS	¥7,200	
701-31-0602-BLK		2021	RH SIDE BODY COVER WITH PAINTING BLACK	1	PCS	¥7,200	
12	701-31-0701		RH SIDE COVER MESH	1	PCS	¥300	
13	701-31-0802-RED	2021	RH SIDE COVER WITH PAINTING RED	1	PCS	¥3,800	
	701-31-0802-SIL	2021	RH SIDE COVER WITH PAINTING SATIN SILVER	1	PCS	¥3,800	
	701-31-0802-BLK	2021	RH SIDE COVER WITH PAINTING BLACK	1	PCS	¥3,800	
	701-31-0802-ORG	2021	RH SIDE COVER WITH PAINTING ORANGE	1	PCS	¥3,800	
	701-31-0802-GRN	2021	RH SIDE COVER WITH PAINTING GREEN	1	PCS	¥3,800	
14	701-25-2001		BUSH Φ6.5×8/Φ18×2+Φ8.5×6	5	PCS	¥300	
15	701-23-1701		3D EMBLEM- GPX	2	PCS	¥1,300	
16	701-31-1101		3D EMBLEM-A POPZ	2	PCS	¥1,700	

ENGINE

POPZ 2021-43

PICTURE

NO

GPX CODE

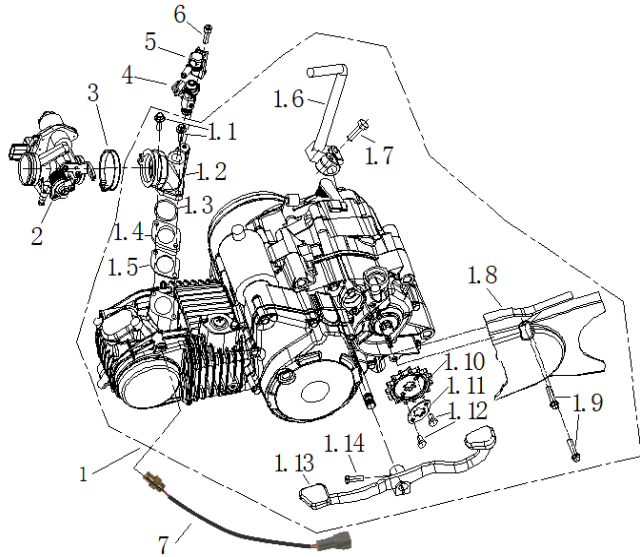
VER.

ENGLISH DESCRIPTION

**QTY
(PCS)**

UNIT

**PRICE/PCS
JPY**



1	701-45-0101		ENGINE ASSY 125CC	1	SET	¥170,000
1.1	701-45-0201		HEXAGONAL BOLT GB/T 5783 M6×20	2	PCS	¥100
1.2	701-45-0301		INTAKE PIPE	1	PCS	¥5,000
1.3	701-45-0401		O SEAL	1	PCS	¥200
1.4	701-45-0501		INTAKE PIPE HEAT INSULATION GASKET	1	PCS	¥400
1.5	701-45-0601		INTAKE PIPE GASKET	1	PCS	¥100
1.6	701-45-0701		KICK START	1	PCS	¥3,200
1.7	701-45-0801		HEXAGONAL BOLT GB/T 5783 M8×25	1	PCS	¥100
1.8	701-45-0901		DRIVE SPROCKET COVER	1	PCS	¥2,700
1.9	701-45-1001		HEXAGONAL FLANGE BOLT GB/T 16674.1 M6×25	2	PCS	¥100
1.10	701-45-1101		DRIVE GEAR 482-14	1	PCS	¥900
1.11	701-45-1201		DRIVE GEAR PRESS PLATE	1	PCS	¥100
1.12	701-45-1301		HEXAGONAL BOLT GB/T 5783 M6×10	2	PCS	¥100
1.13	701-45-1401		GEAR PEDAL	1	PCS	¥2,200
1.14	701-45-0201		HEXAGONAL BOLT GB/T 5783 M6×20	1	PCS	¥100
2	701-45-1601		THROTTLE BODY ASSY	1	PCS	¥22,000
3	701-45-1701		CLIP Φ33-Φ57	1	PCS	¥300
4	701-45-1801		INJECTOR	1	PCS	¥13,000
5	701-45-1901		INJECTOR CAP	1	PCS	¥1,200
6	701-45-2001		SOCKET HEAD CAP SCREWS GB/T70.1 M6×20	1	PCS	¥100
7	701-45-2101		CYLINDER TEMPERATURE SENSOR	1	PCS	¥2,700



British Green



Vermilion Orange



Satin Silver



Candice Red



Cayn Super Black