

GPX

Legend
150 Fi

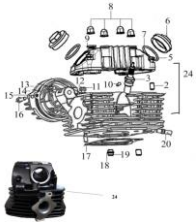
The
Original
Never die



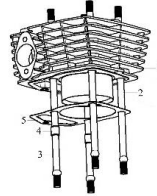
สมุดคู่มืออะไหล่
Legend 150 Fi

ENGINE

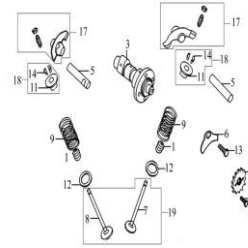
CYLINDER/CYLINDER HEAD P1



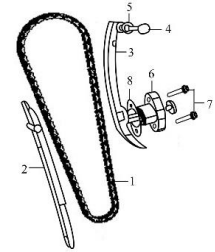
CYLINDER COMP. P2



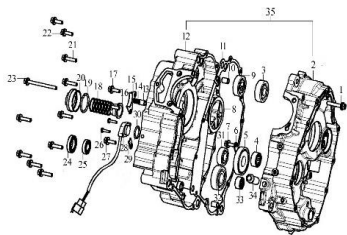
VALVE ACTUATING MECHANISM P3



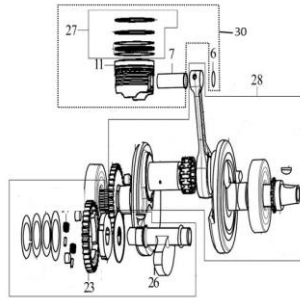
CHAIN,TIMING P4



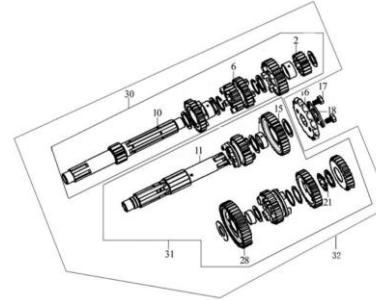
CRANKCASE ASSY P5



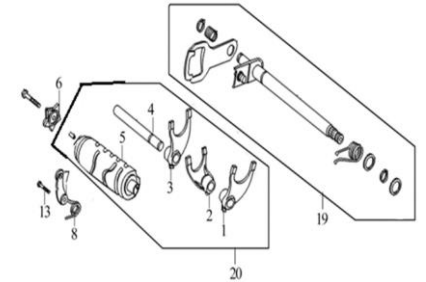
CRANKSHAFT COMP P6



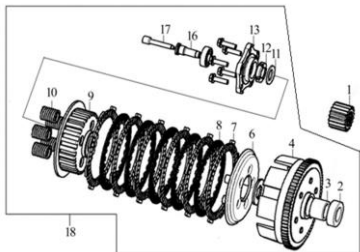
ACTUATING ASSY P7



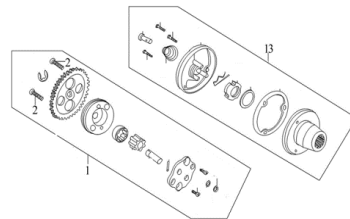
SPEED CONTROL ASSY. P8



CLUTCH ASSY. P9



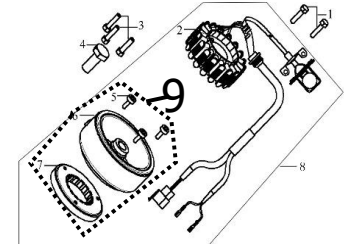
LUBRICATING GEAR P10



COVER COMP.,RIGHT P11

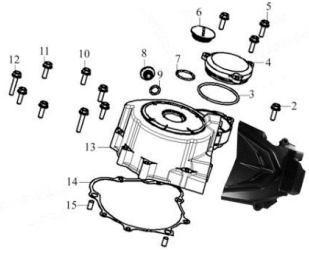


GENERATOR ASSY. P12

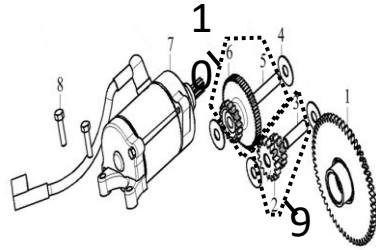


ENGINE

COVER COMP.,LEFT P13

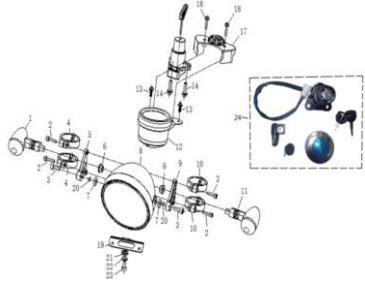


ELECTRIC STARTER ASSY P14

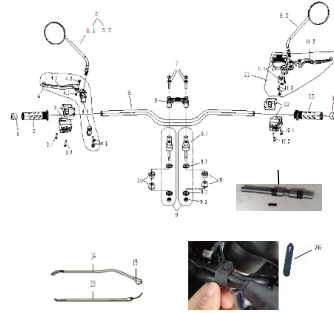


FRAME

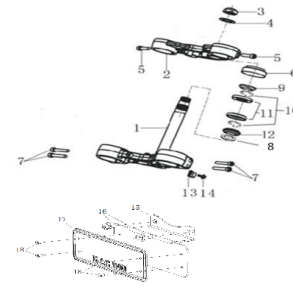
LIGHT & METER P15



HANDLE BAR & REAR MIRROR P16



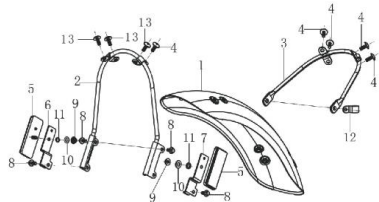
STEERING STEEM P17



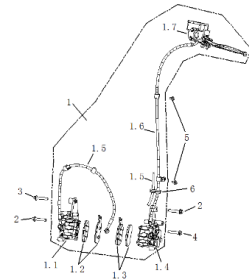
FRONT SHOCK P18



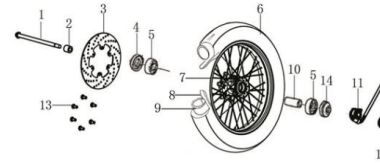
FRONT FENDER P19



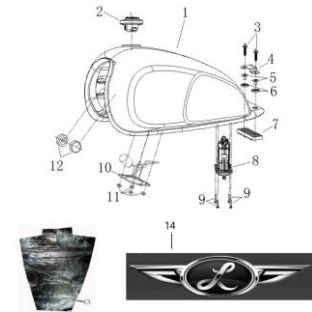
FRONT BREAK PUMP P20



FRONT WHEEL ASSY P21



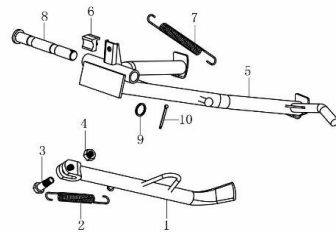
FUEL TANK P22



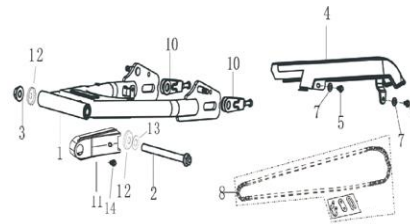
LEFT AND RIGHT COVER P23



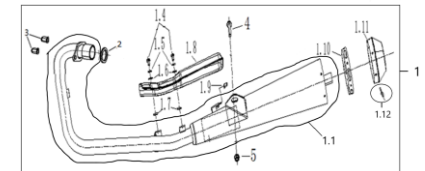
SIDE SUPPORT P24



SWING ARM & CHAIN BOX P25

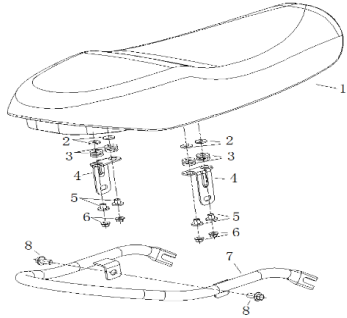


MUFFLER ASSY P26

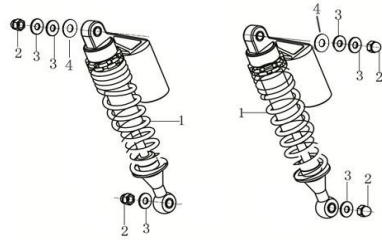


FRAME

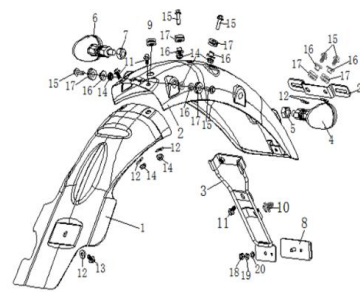
SEAT & SEAT COVER P27



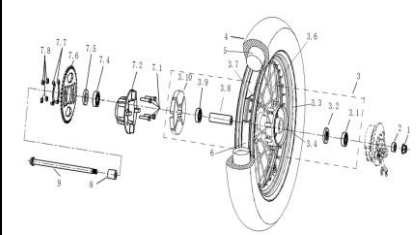
REAR SHOCK P28



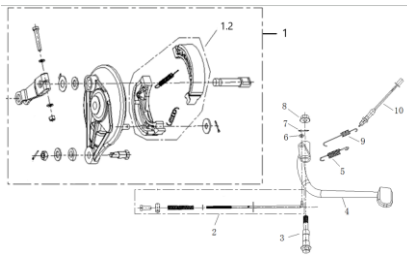
REAR FENDER P29



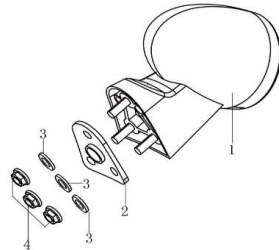
REAR WHEEL P30



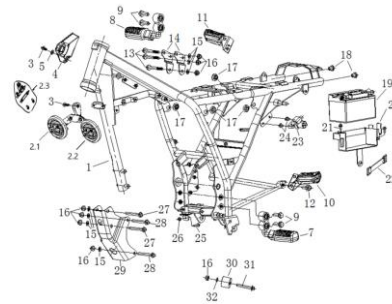
REAR BREAK ASSY P31



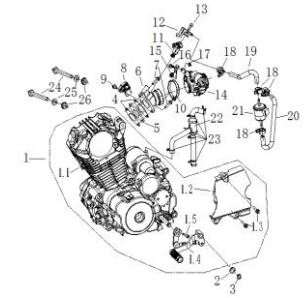
TAIL LIGHT P32



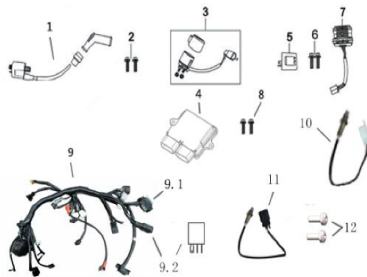
FRAME & FOOTREST P33



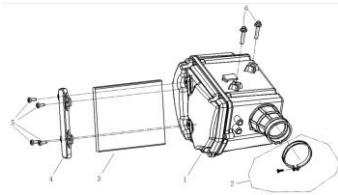
CARBURATOR, OIL COOLER P34



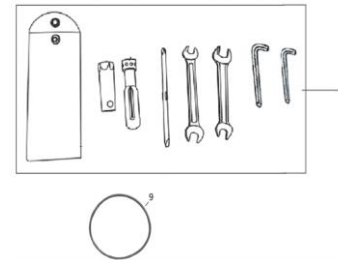
ELECTRICAL PARTS P35



AIR FILTER P36



TOOLS P37



CYLINDER HEAD COMP.,

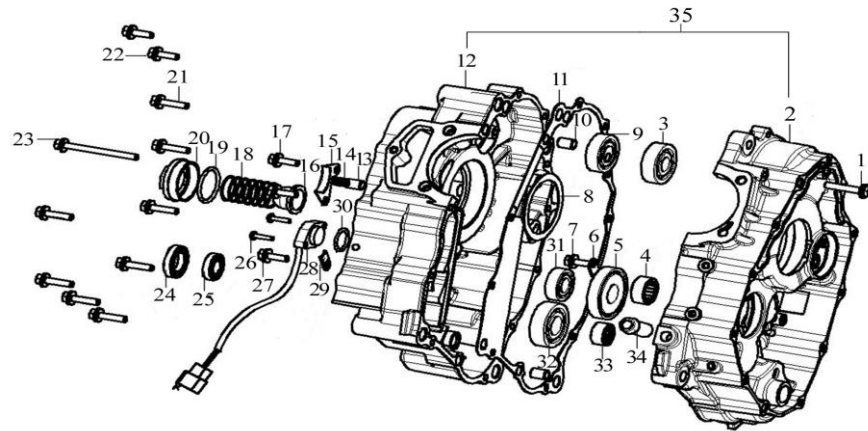
LEG150-01

PICTURE	NO.	GPP CODE	Model	ENGLISH DESCRIPTION	QTY	Price (UNIT)
<p>The diagram shows an exploded view of a cylinder head assembly. Part 24 is the main assembly, shown in a photograph at the bottom left. The exploded view includes: 2 (PIN, DOWEL), 3 (PLUG, SPARK), 5 (BOLT, HEXAGON FLANGE), 6 (CAP, TAPPET ADJUSTING HOLE), 7 (RING, SEAL), 8 (ACORN NUT), 9 (WASHER, PLAIN), 10 (STOPPER), 11 (BOLT, HEXAGON FLANGE), 12 (WASHER, PLAIN), 13 (RING, SEAL), 14 (GASKET, CYLINDER HEAD LEFT SIDE COVER), 15 (COVER COMP., CYLINDER HEAD LEFT SIDE), 16 (BOLT, HEXAGON FLANGE), 17 (GASKET, CYLINDER HEAD), 18 (RING, SEAL), 19 (PIN, DOWEL), and 20 (STUD). The main assembly (24) is shown with a spark plug (3) and a stopper (10) installed.</p>	2	150-01-0201		PIN,DOWEL	2	¥100
	3	150-01-0301		PLUG,SPARK	1	¥1,100
	5	150-01-0501		BOLT,HEXAGON FLANGE	4	¥200
	6	150-01-0601		CAP,TAPPET ADJUSTING HOLE	2	¥200
	7	150-01-0701		RING,SEAL	2	¥200
	8	150-01-0801		ACORN NUT	4	¥100
	9	150-01-0901		WASHER,PLAIN	4	¥100
	10	150-01-1001		STOPPER	1	¥100
	11	150-01-1101		BOLT,HEXAGON FLANGE	1	¥200
	12	150-01-1201		WASHER,PLAIN	1	¥100
	13	150-01-1301		RING,SEAL	1	¥300
	14	150-01-1401		GASKET,CYLINDER HEAD LEFT SIDE COVER	1	¥100
	15	150-01-1501		COVER COMP.,CYLINDER HEAD LEFT SIDE	1	¥1,400
	16	150-01-1601		BOLT,HEXAGON FLANGE	2	¥100
	17	150-01-1701		GASKET,CYLINDER HEAD	1	¥400
	18	150-01-1801		RING,SEAL	1	¥100
	19	150-01-1901		PIN,DOWEL	2	¥100
	20	150-01-2001		STUD	2	¥200
	24	150-01-2401	LG150S FI	CYLINDER HEAD KIT	1	¥25,000

CRANKCASE ASSY.

LEG150-05

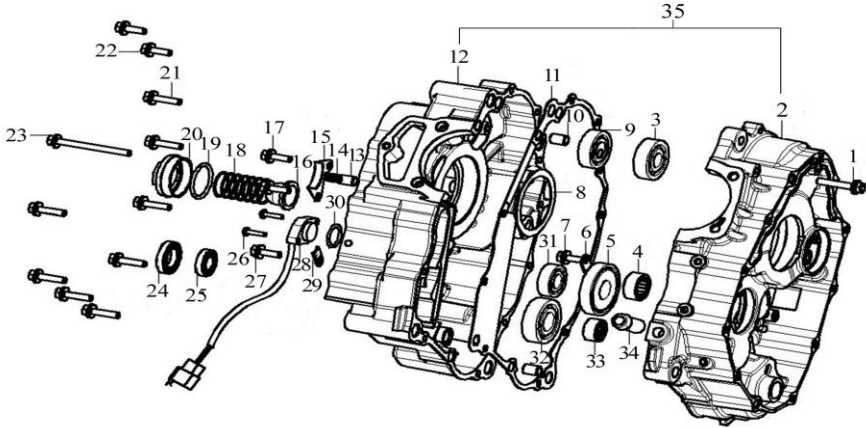
PICTURE



NO.	GPP CODE	Model	ENGLISH DESCRIPTION	QTY	Price (UNIT)
1	150-05-0101		BOLT,HEXAGON FLANGE	1	¥200
2	150-05-0201		BODY SET,RIGHT CRANKCASE	1	¥9,800
3	150-05-0301		BEARING	1	¥1,400
4	150-05-0401		BEARING	1	¥200
5	150-05-0501		BEARING 6006 x 2120	1	¥1,100
6	150-05-0601		CHECK PLATE,MAINSHAFT BEARING	1	¥200
7	150-05-0701		BOLT,HEXAGON FLANGE	1	¥100
8	150-05-0801		OIL SEAL	1	¥300
9	150-05-0901		BEARING	1	¥1,600
10	150-13-1501		PIN,DOWEL	2	¥100
11	150-05-1101		GASKET,CRANKCASE	1	¥300
12	150-05-1201		BODY SET,LEFT CRANKCASE	1	¥15,000
13	150-05-1301		PRESSING PIN COMP.	1	¥100
14	150-05-1401		SPRING,COMPRESSION	1	¥100
15	150-05-1501		PLATE,TIMING CHAIN LIMIT	1	¥200
16	150-05-1601		SCREEN,OIL STRAINER	1	¥200
17	CR5-05-17		BOLT,HEXAGON FLANGE	2	¥100
18	150-05-1801		SPRING,COMPRESSION	1	¥100
19	150-05-1901		RING,SEAL	1	¥200
20	150-05-2001		CAP,TAPPET ADJUSTING HOLE	1	¥200
21	150-05-2108		BOLT,HEXAGON FLANGE	8	¥200
22	CR5-05-22		BOLT,HEXAGON FLANGE	2	¥200
23	150-05-2301		BOLT,HEXAGON FLANGE	1	¥200
24	150-05-2401-TH		OIL SEAL (20-34-7)	1	¥500
25	150-05-2501-TH		OIL SEAL (14-28-7)	1	¥400
26	CR5-05-26		SCREW,CROSS RECESSED PAN HEAD/WASHER,ELASTIC/WASHER,PLAIN COMP.	2	¥100
27	150-05-2701		BOLT,HEXAGON	1	¥100
28	150-05-2801		SWITCH COMP.,GEAR INDICATOR	1	¥700
29	150-05-2901		DISC,TENSION	1	¥100
30	150-05-3001		RING,SEAL	1	¥100

CRANKCASE ASSY.

LEG150-05

PICTURE	NO.	GPP CODE	Model	ENGLISH DESCRIPTION	QTY	Price (UNIT)
	31	150-05-3101		BEARING	1	¥600
	32	150-05-3201		BEARING	1	¥700
	33	150-05-3301		BEARING	1	¥300
	35	150-05-3501		CRANKCASE KIT	1	¥24,000

CRANKSHAFT COMP.

LEG150-06

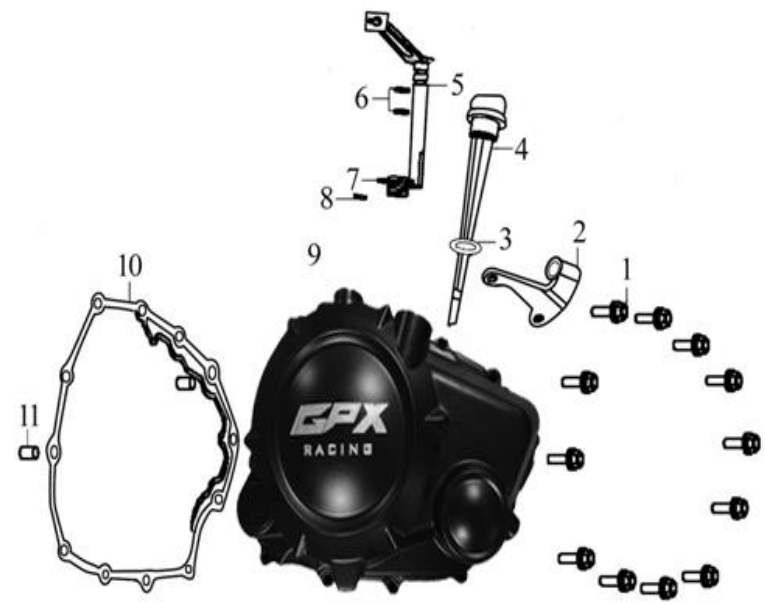
PICTURE	NO.	GPP CODE	Model	ENGLISH DESCRIPTION	QTY	Price (UNIT)
	6	150-06-0601		CHECK RING,STEEL CABLE BAFFLE	2	¥100
	7	150-06-0701		PIN,PISTON	1	¥200
	11	150-06-1101		PISTON COMP.	1	¥2,000
	23	150-06-2301		GEAR,BALANCING ARBOR DRIVEN	1	¥5,400
	27	150-06-2701		RING SET,PISTON	1	¥3,500
	28	150-06-2801		CRANKSHAFT COMP.	1	¥20,000
	29	150-06-2901		BALANCING ARBOR COMP.	1	¥11,000
	30	150-06-3001		PISTON & RING SET	1	¥5,500

CRANKCASE COVER COMP.,RIGHT

LEG150-11

PICTURE

NO.	GPP CODE	Model	ENGLISH DESCRIPTION	QTY	Price (UNIT)
1	150-11-0101		BOLT,HEXAGON FLANGE	12	¥100
2	150-11-0201		PLATE,CLUTCH CABLE LOCATING	1	¥200
3	150-11-0301		RING,SEAL	1	¥100
4	150-11-0401		GAUGE COMP.,OIL LEVEL	1	¥300
5	150-11-0501		JOYSTICK ASSY.,CLUTCH	1	¥700
6	CR5-11-06		RING,SEAL	2	¥100
7	150-11-0701		SPRING,TORSIONAL	1	¥100
8	150-11-0801		BACKING PIN	1	¥100
9	150-11-0901		COVER COMP.,RIGHT CRANKCASE	1	¥8,800
10	150-11-1001		GASKET,RIGHT CRANKCASE COVER	1	¥500
11	250-11-1102		PIN,DOWEL	2	¥200



HANDLE BAR & REAR MIRROR

LG150 FI - 16

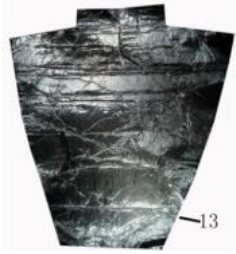
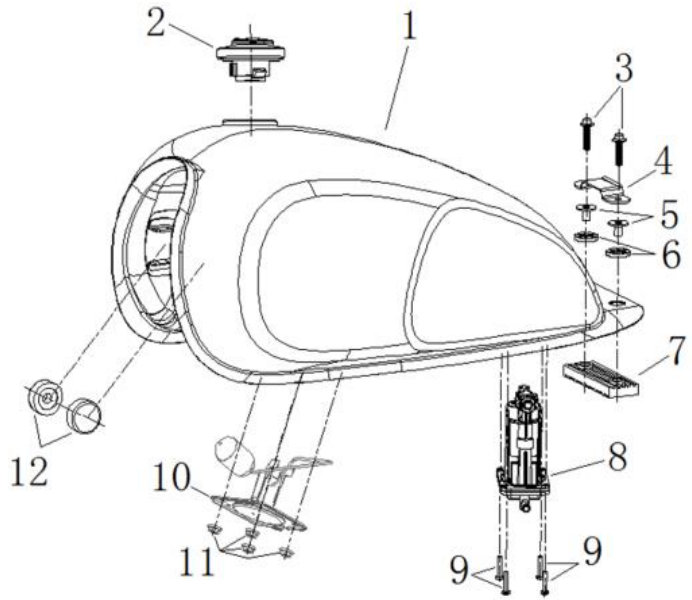
PICTURE	NO	Version	GPX CODE	ENGLISH DESCRIPTION	QTY (PCS)	Price (UNIT)
	1	LG 150 FI	150-16-0101	Handlebar Balance Hammer	2	¥900
	2	LEG150FI/TWIN	250-20-0202	Handle grsp LH.	1	¥1,100
	3	LEG150FI/TWIN	250-20-0302	Switch assy LH.	1	¥2,700
	3.1	LEG150FI/TWIN	250-20-1001	Pan head screws with cross recess, M5×25	1	¥100
	3.2	LEG150FI/TWIN	250-20-1101	Pan head screws with cross recess, M5×35	1	¥100
	4		LEG-16-13	CLUTCH LEVER LH.	1	¥1,600
	5.1	LEG150FI/TWIN	250-20-05.102	LH Side mirror	1	¥3,000
	5.2	LEG150FI/TWIN	250-20-05.202	RH Side mirror	1	¥3,000
	6	LG 150 FI	150-16-0601	Handle bar	1	¥8,000
	7	LEG150FI/TWIN	250-20-0702	Hexagon socket head cap screws,M8×	4	¥100
	8	LEG150FI/TWIN	250-20-0802	Handle Riser upper	1	¥2,400
	9.1	LEG150FI/TWIN	250-20-9.102	Handle Riser holder	2	¥2,200
	9.2	LEG150FI/TWIN	250-20-9.202	Washer \varnothing 12	2	¥300
	9.3	LEG150FI/TWIN	250-20-9.302	Washer \varnothing 8	2	¥300
	9.4	LEG150FI/TWIN	250-20-9.402	All-metal hexagonal flange locking nut M8×1.	2	¥100
	10	LEG150FI/TWIN	250-20-1002	Handle Riser holder of rubber	4	¥200
	11	LG 150 FI	150-16-1101	Front brake pump with brake lever	1	¥9,000
	11	LG 150 FI	150-16-1101-1	Front brake pump	1	¥7,600
	11	LG 150 FI	150-16-1101-2	Front brake lever	1	¥1,500
	11	LEG150FI/TWIN	250-20-1201	Hexagonal flange bolt,M6×25,GB/T 16674.1-	2	¥100
	12	LEG150FI/TWIN	250-20-1202	Switch assy RH.	1	¥3,000
	12	LEG150FI/TWIN	250-20-1101	Pan head screws with cross recess, M5×35	1	¥100
	12	LEG150FI/TWIN	250-20-1801	Pan head screws with cross recess, M5×45	1	¥100
	13	2020	250-20-1302	Handle grsp RH.	1	¥1,200
	14	LG 150 FI	150-16-1401	Clutch cable	1	¥1,000
	15		LEG-16-15	Clutch cable rubber	1	¥200
16	LG 150 FI	150-16-1601	Thottle cable	1	¥700	
26		250-20-2601	BandL 14×L62mm	2	¥200	

FUEL TANK

LG150 FI - 22

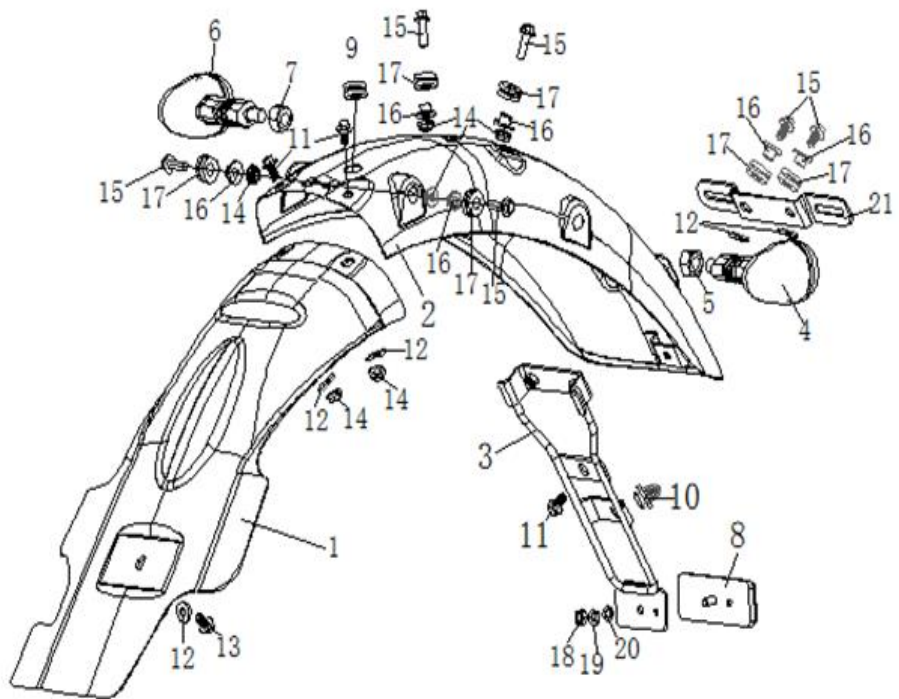
PICTURE

NO	Version	GPX CODE	ENGLISH DESCRIPTION	QTY (PCS)	Price (UNIT)
1	LG 150 FI	150-22-0101-BLK	TANK -Black (with sticker)	1	¥36,000
1	LG 150 FI	150-22-0101-MBLK	TANK -Matt-Black (with sticker)	1	¥36,000
1	LG 150 FI	150-22-0101-SIL	TANK -Silver (with sticker)	1	¥36,000
3	LG 150 FI	150-22-0301	Hexagonal flange bolt,M6×35	2	¥100
4		LEG-22-04	Bracket A for seat	1	¥400
5		250-26-0501	Bush for tank	2	¥200
6		250-26-1301	Rubber for tank Fr. Postion	2	¥100
7		250-26-0601	Rubber for tank	1	¥600
8	LG 150 FI	150-22-0801	Electric fuel injection pump	1	¥19,000
9	LG 150 FI	150-22-0901	Pan head screws with cross recess, M4×18	4	¥100
10		LEG-22-08	Fuel sensor	1	¥1,200
11		LEG-29-14	Hexagonal flange nut M6	4	¥100
12		LEG-22-12	Rubber	2	¥200
13		250-26-1201	Oil Tank Heat Insulation Plate	1	¥1,500
14	LG 150 FI	150-38-0101-TH	STICKER LEGEND LOGO	2	¥2,600



REAR FENDER

LG150 FI - 29



PICTURE	NO	Version	GPX CODE	ENGLISH DESCRIPTION	QTY (PCS)	Price (UNIT)
	1		LEG-29-01	Rr.fender A	1	¥1,200
	2		250-33-0201-BLK	Rr. Fender B, Gross Black	1	¥8,000
	2	2020	250-33-0202-BLK2	Rr. Fender B, MATT Black	1	¥8,000
	2	2020	250-33-0202-SIL1	Rr.fender,Rr SIL	1	¥8,000
	3		250-33-0301	Rr.reflector bracket	1	¥1,600
	4		250-33-0401	Rr. Turning light LH.	1	¥1,400
	5		LEG-17-14	Hexagon flange Nut M12, GB6177-2000	1	¥100
	6		250-33-0601	Rr. Turning light RH.	1	¥1,400
	7		LEG-17-14	Hexagon flange Nut M12, GB6177-2000	1	¥100
	8		LEG-29-08	Rr. Reflector	1	¥400
	9		LEG-29-17	H rubber	1	¥200
	10		250-33-1001	Rubber for rear licence pleat	1	¥100
	11		250-19-2301	Hexagonal flange bolt,M6×12	3	¥100
	12		LEG-19-11	WASHER Φ6	5	¥100
	13		LEG-29-13	Hexagonal flange bolt M6×16	1	¥100
	14		LEG-29-14	Hexagon flange Nut M6, GB6177-2000	6	¥100
	15		LEG-29-15	Hexagonal flange bolt M6×20	6	¥100
	16		250-19-2201	BUSH Φ6.5×10/Φ18×2+Φ8.5×8	6	¥300
	17		250-19-2101	H rubber	6	¥100
	18		LEG-19-09	Hexagonal flange nut M6	1	¥100
	19		LEG-19-10	Spring washer Φ6	1	¥100
	20		LEG-19-11	WASHER Φ6	1	¥100
	21		250-33-2101	Bracket for Rr. Plate	1	¥600
	22		250-33-2201-TH	Foam for rear fender, aviod touched the frame	1	¥300

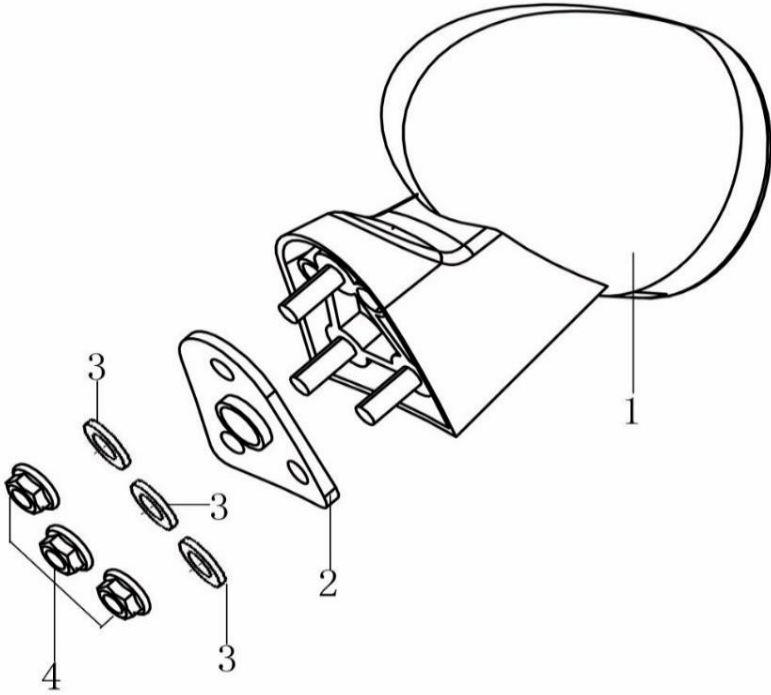
REAR WHEEL

LG150 FI - 30

PICTURE	NO	Version	GPX CODE	ENGLISH DESCRIPTION	QTY (PCS)	Price (UNIT)
	1	LG 150 FI	150-30-0101	All-metal hexagonal flange locking nut M14×	1	¥100
	2	LG 150 FI	LEG150S-30-12	Rear wheel bush, RH	1	¥300
	3		LEG150S-30-07	Rr. wheel assy.	1	¥22,000
	3.1	LG 150 FI	150-30-03101	Bearing 6202	1	¥800
	3.2	LG 150 FI	150-30-03201	SEAL	1	¥200
	3.3		LEGB200-30-20-TH	Rear Ring only 3.00x17	1	¥12,000
	3.4		LEG150S-30-07.1	Rear wheel hub only	1	¥9,900
	3.8	LG 150 FI	150-30-03801	Bush	1	¥700
	3.9		LEG150S-30-09	Bearing 6202	1	¥800
	3.10		LEG150S-30-22	Damper set wheel	4	¥1,100
4		LEG150S-30-26-TH	REAR WHEEL OUTER TIRE 120/90-17	1	¥27,000	
5		LEG150S-30-27-TH	RR. WHEEL INNER TIRE 120/90-17	1	¥2,600	
6		LEG-TRR-TH	Flap,tyre	1	¥400	
7.1		LEG-30-13	Rr. Sprocket bolt	4	¥200	
7.2	LG 150 FI	150-30-07201	Rr. Sprocket body parts	1	¥4,100	
7.4		250-34-12.501	Bearing 6204R	1	¥900	
7.5	LG 150 FI	150-30-07501	Seal 27×47×7	1	¥200	
7.6	LG 150 FI	150-30-07601	Rr. Sprocket 428-50	1	¥3,200	
7.7		250-34-12.801	Limiting plate	2	¥100	
7.8		250-20-9.402	All-metal hexagonal flange locking nut M8×1.	4	¥100	
8		250-12-0201	Rear wheel bush, LH	1	¥1,300	
9		250-34-1401	Rear wheel axle	1	¥1,600	
10		LEG150S-30-21	Spoke & Nipple Set, Rear	1	¥3,800	

TAIL LIGHT

LG150 FI - 32

PICTURE	NO	Version	GPX CODE	ENGLISH DESCRIPTION	QTY (PCS)	Price (UNIT)
	1		250-36-0101	Tail light	1	¥4,300
	2		250-36-0201	Rubber for tail light	1	¥300
	3		LEG-19-11	WASHER $\Phi 6$	3	¥100
	4		LEG-29-14	Hexagon flange Nut M6, GB6177-2000	3	¥100

FRAME & FOOTREST

LG150 FI - 33

PICTURE	NO	Version	GPX CODE	ENGLISH DESCRIPTION	QTY (PCS)	Price (UNIT)
	1	LG 150 FI	150-33-0101-GW	Frame	1	¥72,000
	2.1		250-37-0401-H-TH	ALTHORN E-Mark High	1	¥1,300
	2.2		250-37-0401-L-TH	SACKBUT E-Mark Low	1	¥1,300
	2.3		250-37-04.102	Horn bracket only	1	¥1,600
	3		250-19-1301	Hexagonal flange bolt M6×16	1	¥100
	4		LEG-33-25	Tool box	1	¥600
	5		701-24-1701	Washr $\varnothing 6$	1	¥100
	7		LEG-33-14	Fr. footrest LH	1	¥2,400
	8		LEG-33-15	Fr. footrest RH	1	¥2,400
	9	LG 150 FI	150-33-0901	Hexagon headed bolt M10×1.25×30	1	¥100
	10		LEG-33-16	Rr. Footrest assy RH.	2	¥1,900
	11		LEG-33-17	Rr. Footrest assy RH.	1	¥1,900
	12	LG 150 FI	150-33-1201	Hexagon headed bolt M10×1.25×16	1	¥100
	13		250-37-1001	Hexagon headed bolt M8×65	1	¥200
	14		LEG150-33-06	Engine connect bracket upper,with painting	1	¥800
	15		LEG-33-07	Washer	1	¥100
	16		250-20-9.402	All-metal hexagonal flange locking nut M8×1.	1	¥100
	17		LEG-33-13	Side cover rubber	3	¥100
	18		250-37-1201	Plug 007000	1	¥200
	19		120-21-2301-TH	Battery 7AH YUSA	1	¥9,700
	20		250-37-2001	Bracket for battery	1	¥1,300
	21		LEG-33-23	Hexagon headed bolt M6×30	1	¥100
	22		LEG-33-22	Battery tape	6	¥300
	24		LEG-25-05	Hexagonal flange bolt M6×10	2	¥100
	25	LG 150 FI	150-33-2501	Bolt M6×30	2	¥100
	26	LG 150 FI	150-31-01901	Nut M6	2	¥100
	27		LEG-33-10	Hexagon headed bolt M8×70	2	¥200
	28		LEG-33-11	Hexagon headed bolt M8×90	2	¥200
	29		LEG-33-09	Engine connect plate Fr.,with painting	1	¥800
	30		250-37-3501	Chain tensioner	1	¥1,500
	31		250-37-3601	Hexagon headed bolt M8×55	1	¥100
	32		250-37-3401	Chain tensioner bush	2	¥200

CARBURATOR, OIL COOLER

LG150 FI - 34

PICTURE	NO	Version	GPX CODE	ENGLISH DESCRIPTION	QTY (PCS)	Price (UNIT)
	1.1	LG 150 FI	150-34-0101	Engine 149cc	1	¥200,000
	1.2		LEG200-13-01	Driving sprocket cover	1	¥3,600
	1.4		LEG-34-05	Gear shaft pedal	1	¥3,400
	1.5		CR5-13-05	Hexagonal bolt GB/T 5783 M6×20	1	¥100
	2	LG 150 FI	150-34-0201	Washer $\Phi 12 \times \Phi 20 \times 2$	1	¥100
	3	LG 150 FI	150-34-0301	External Circlips $\Phi 12$	1	¥100
	4	LG 150 FI	150-34-0401	Gasket	2	¥100
	5	LG 150 FI	150-34-0501	Intake pipe heat insulation gasket	1	¥100
	6	LG 150 FI	150-34-0601	Air intake pipe	1	¥4,700
	7		250-20-1201	Hexagonal flange bolt, M6×25, GB/T	2	¥100
	8	LG 150 FI	150-34-0801	Intake air pressure sensor	1	¥12,000
	9		250-19-1301	Hexagonal flange bolt M6×16	1	¥100
	10		250-15-0701	Clamp 051000	1	¥300
	11	LG 150 FI	150-34-1101	Injector	2	¥14,000
	12	LG 150 FI	150-34-1201	Oil injector cap	1	¥1,200
	13		250-20-02.201	socket head cap screws GB/T70.1 M6×16	1	¥200
	14	LG 150 FI	150-34-1401	Throttle body assy	1	¥21,000
	15	LG 150 FI	150-34-1501	bracket for RH side decorative cover	1	¥600
	16		250-19-2301	Hexagonal flange bolt, M6×12	1	¥100
	17	LG 150 FI	150-31-01901	Nut M6	1	¥100
	18		150-34-1801	Clip $\Phi 27 - \Phi 51 / W=9$	3	¥300
	19	LG 150 FI	150-34-1901	Fuel pipe B	1	¥1,500
	20	LG 150 FI	150-34-2001	Fuel pipe A	1	¥2,600
	21		250-38-3301	Fuel filter	1	¥1,600
	22	LG 150 FI	150-34-2201	Exhaust gas recovery device	1	¥900
	23		250-38-2201	Oil pipe clip	6	¥100
24		250-38-2501	Hexagon headed bolt M10×115×1.25	2	¥300	
25		250-38-2601	Washr $\Phi 10$	2	¥100	
26		250-30-0501	All-metal hexagonal flange locking nut M10×1.25	2	¥100	

TOOLS

LG150 FI - 38

PICTURE

NO

Version

GPX CODE

ENGLISH DESCRIPTION

QTY
(PCS)

Price
(UNIT)

1

250-41-0101

Tool kits

1

¥900

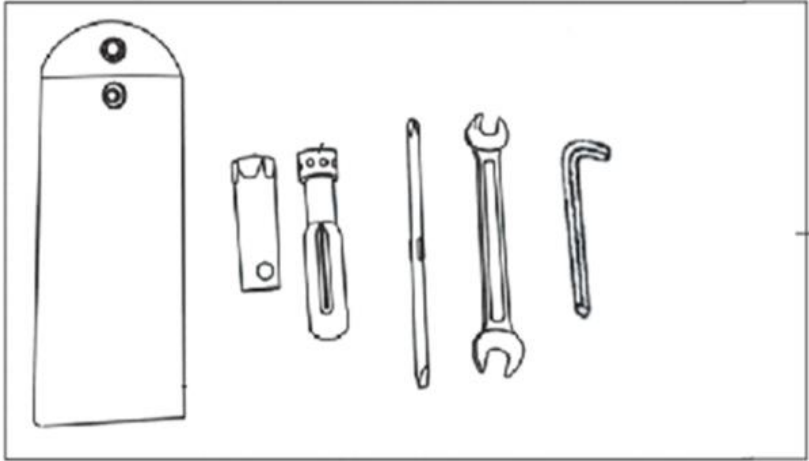
9

250-41-0901

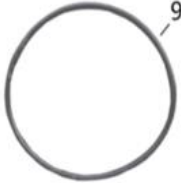
Toolbox band

1

¥200



1



9